

# Double Ridged Horn Antenna Model DRH370

## Electrical Specifications

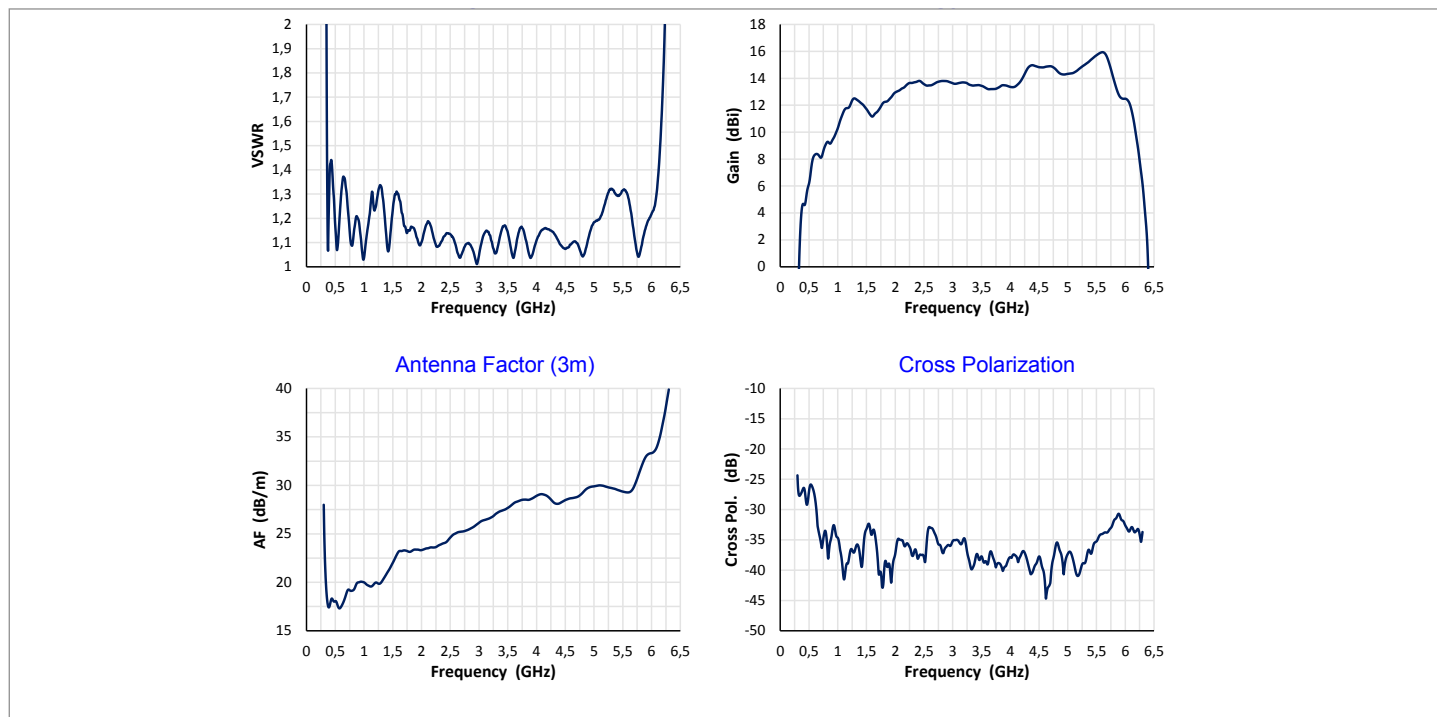
Frequency Range	370 MHz – 6 GHz
VSWR (max.)	< 1.6
Impedance	50 $\Omega$
Connector	N-female
Power (max.)	350 W / 500 W

## Physical Specifications

Width	370 mm (14.57 in)
Depth	285 mm (11.22 in)
Height	485 mm (19.09 in)
Weight	3.5 kg (7.7 lb)

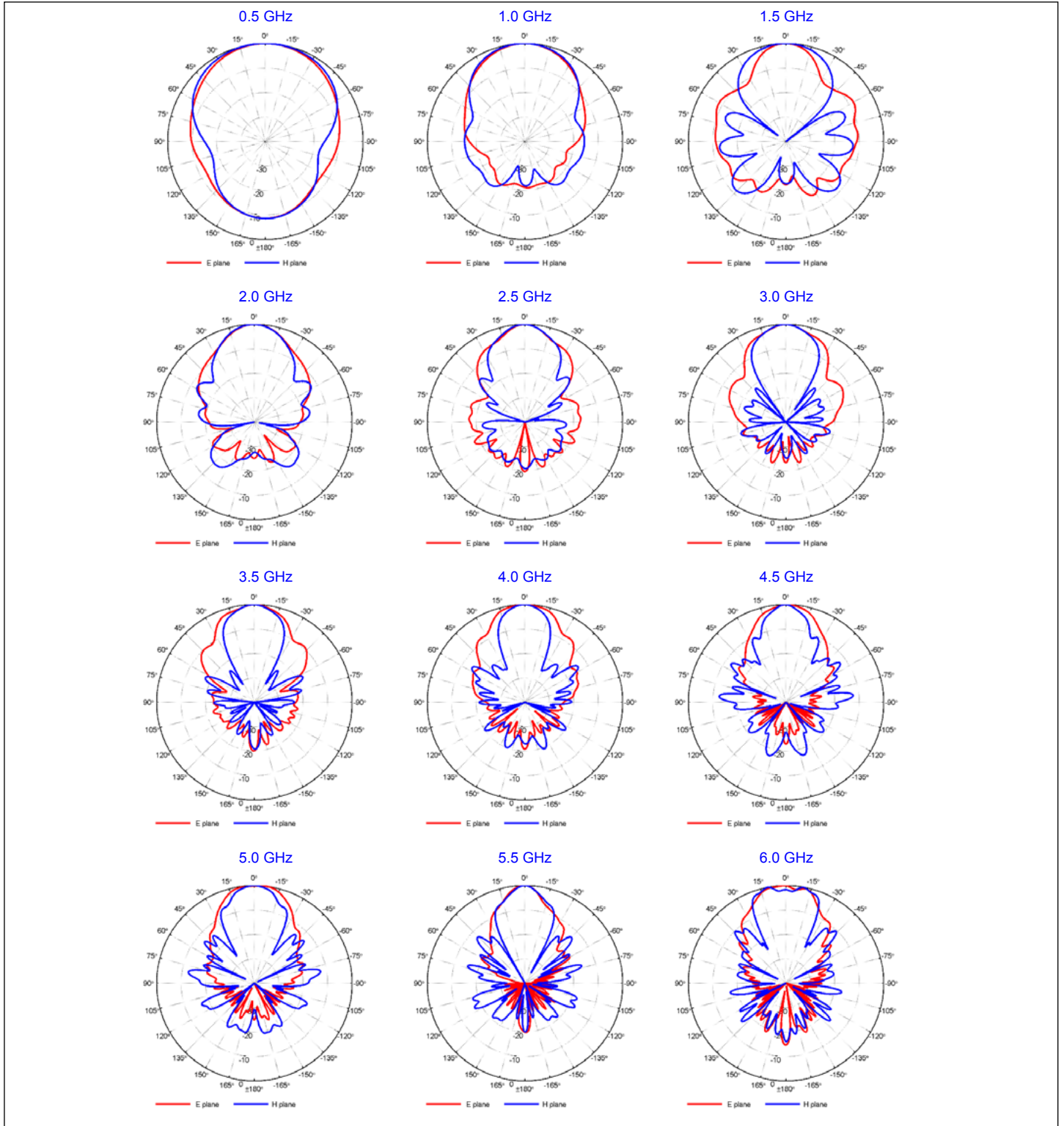


## Typical Parameters



# Double Ridged Horn Antenna Model DRH370

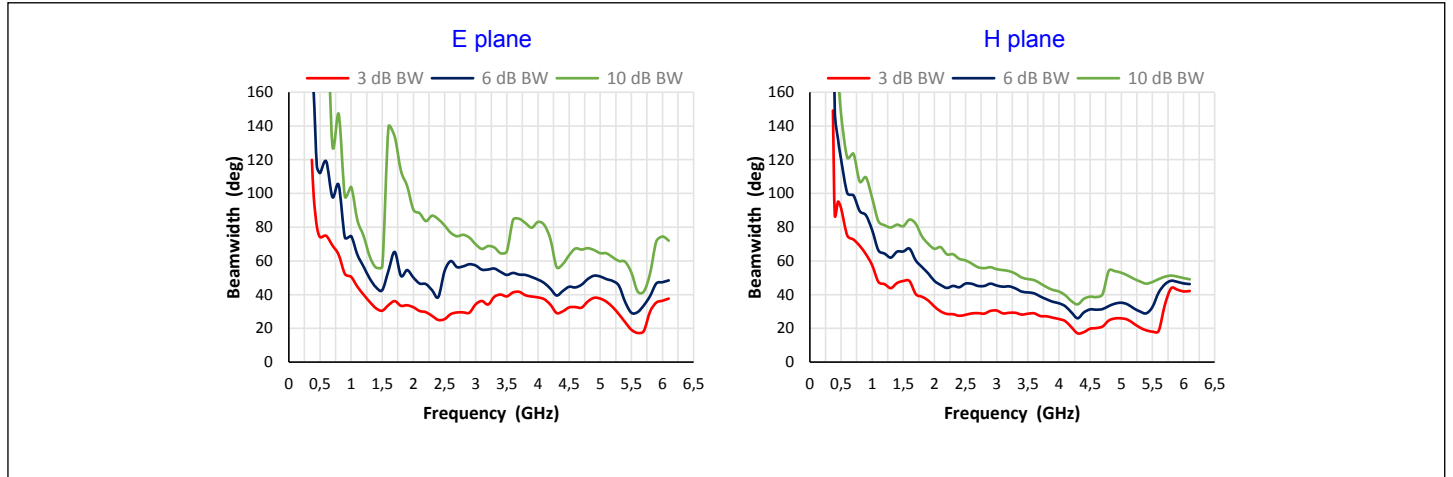
## Radiation Patterns



# Double Ridged Horn Antenna Model DRH370



## Beamwidth



Deutschland

**Telemeter Electronic GmbH**  
Joseph-Gänsler-Str. 10, 86609 Donauwörth  
Tel. +49 906 70693-0, Fax +49 906 70693-50  
info@telemeter.de, www.telemeter.info

Schweiz

**Telemeter Electronic GmbH**  
Romanshorerstr. 117, 8280 Kreuzlingen  
Tel. +41 71 6992020, Fax +41 71 6992024  
info@telemeter.ch, www.telemeter.info

Tschechische Republik

**Telemeter Electronic s.r.o.**  
České Vrbné 2364, 37011 České Budějovice  
Tel. +420 38 5310637 und +420 38510143  
info@telemeter.cz, www.telemeter.info