

Double Ridged Horn Antenna Model DRH110



Telemeter Electronic

Electrical Specifications

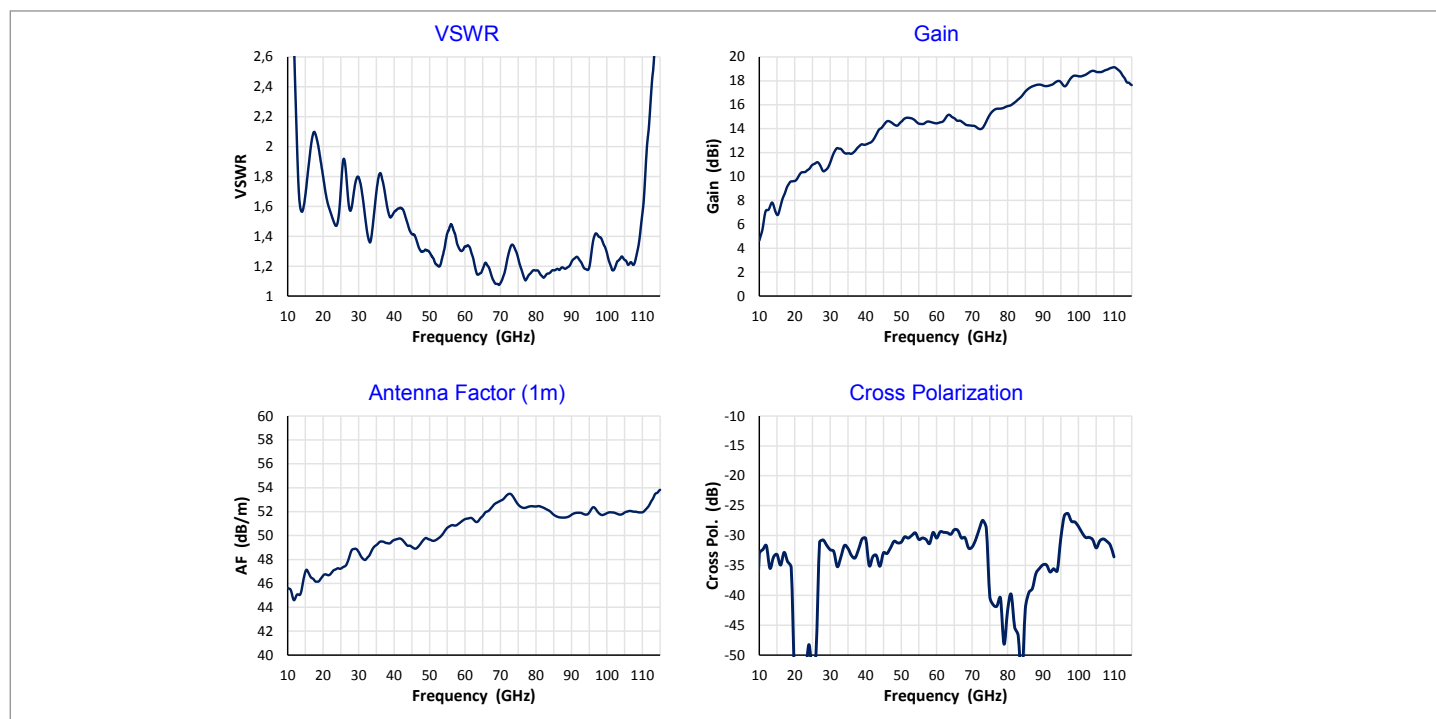
Frequency Range	14 GHz – 110 GHz
VSWR (max.)	< 2.1
Impedance	50 Ω
Connector	1.0 mm female
Power (CW / Pulse)	4 W / 8 W

Physical Specifications

Width	18.6 mm (0.732 in)
Depth	31.9 mm (1.256 in)
Height	15.7 mm (0.618 in)
Weight	22 g (0.049 lb)



Typical Parameters



Deutschland

Telemeter Electronic GmbH

Joseph-Gänsler-Str. 10, 86609 Donauwörth
Tel. +49 906 70693-0, Fax +49 906 70693-50
info@telemeter.de, www.telemeter.info

Schweiz

Telemeter Electronic GmbH

Romanshornstr. 117, 8280 Kreuzlingen
Tel. +41 71 6992020, Fax +41 71 6992024
info@telemeter.ch, www.telemeter.info

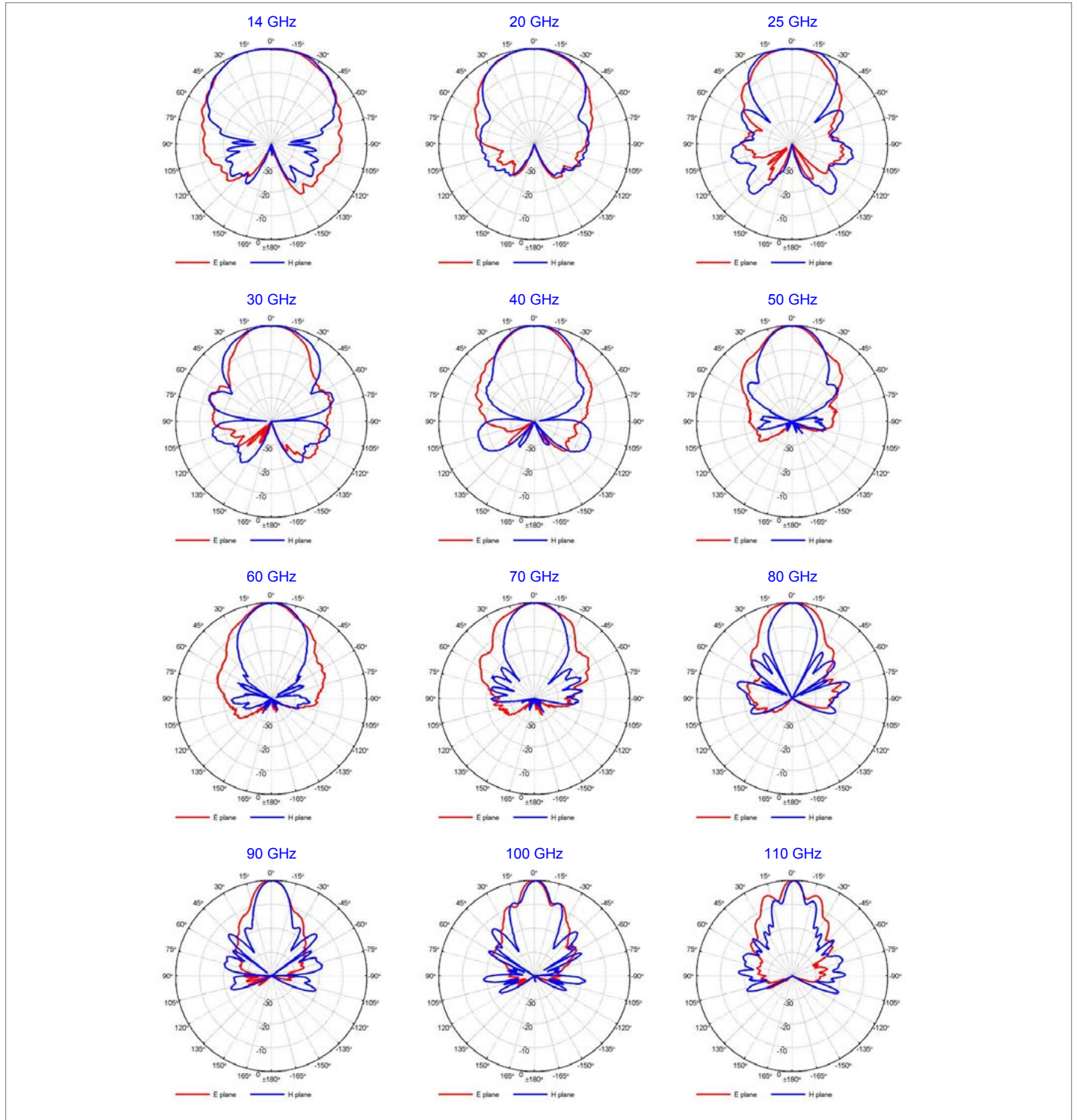
Tschechische Republik

Telemeter Electronic s.r.o.

České Vrbné 2364, 37011 České Budějovice
Tel. +420 38 5310637 und +420 38510143
info@telemeter.cz, www.telemeter.info

Double Ridged Horn Antenna Model DRH110

Radiation Patterns

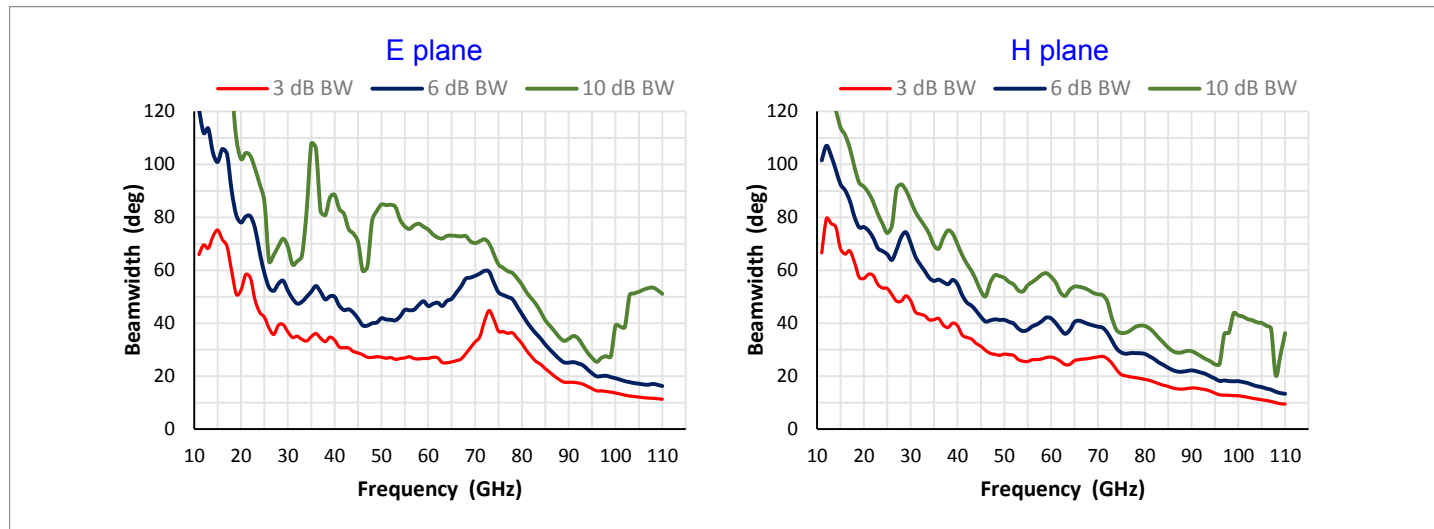


Double Ridged Horn Antenna Model DRH110



Telemeter Electronic

Beamwidth



Deutschland

Telemeter Electronic GmbH

Joseph-Gänsler-Str. 10, 86609 Donauwörth
Tel. +49 906 70693-0, Fax +49 906 70693-50
info@telemeter.de, www.telemeter.info

Schweiz

Telemeter Electronic GmbH

Romanshonerstr. 117, 8280 Kreuzlingen
Tel. +41 71 6992020, Fax +41 71 6992024
info@telemeter.ch, www.telemeter.info

Tschechische Republik

Telemeter Electronic s.r.o.

České Vrbné 2364, 37011 České Budějovice
Tel. +420 38 5310637 und +420 38510143
info@telemeter.cz, www.telemeter.info

Double Ridged Horn Antenna Model DRH110

Antenna and adapter

