

Double Ridged Horn Antenna Model DRH20E



Telemeter Electronic

Electrical Specifications

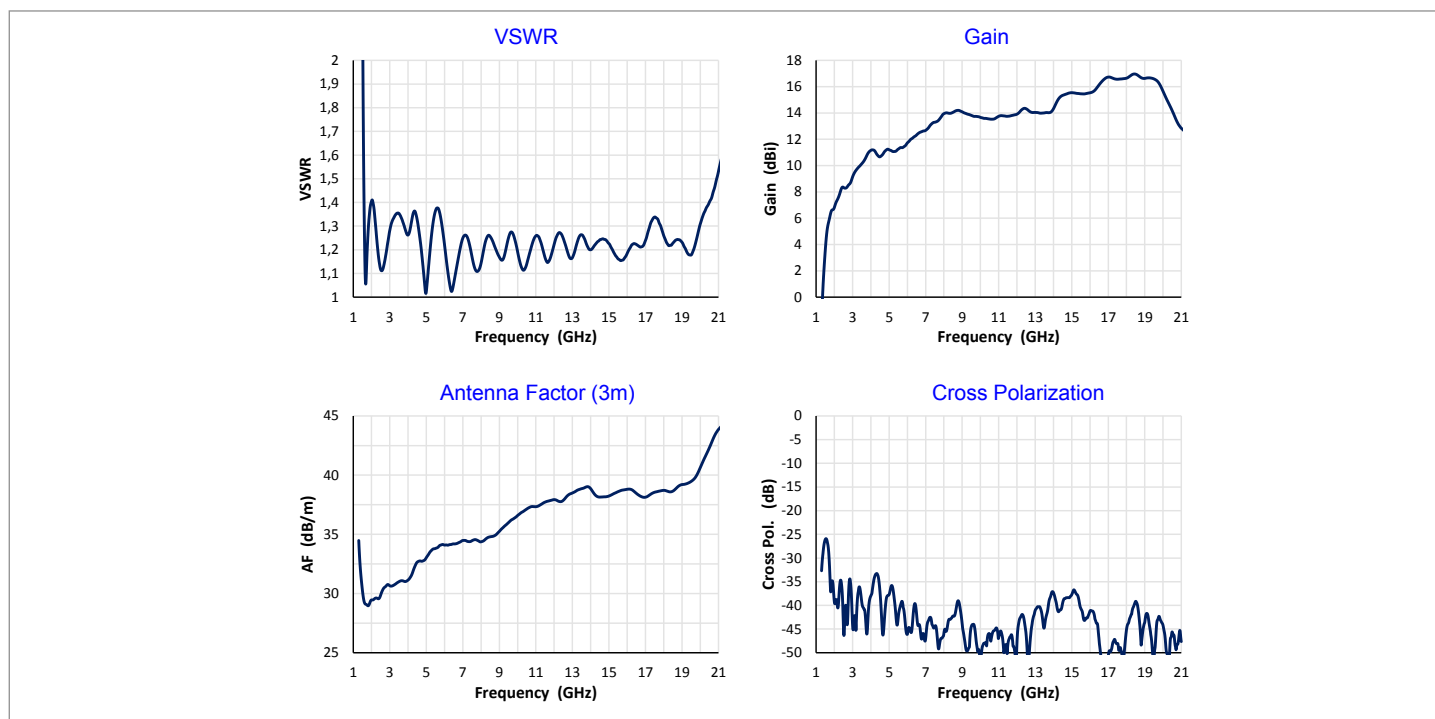
Frequency Range	1.6 GHz – 20 GHz
VSWR (max.)	< 1.5
Impedance	50 Ω
Connector	SMA-female
Power (CW / Pulse)	50 W / 100 W

Physical Specifications

Width	104 mm (4.1 in)
Depth	122.7 mm (4.8 in)
Height	78.7 mm (3.1 in)
Weight	0.29 kg (0.705 lb)



Typical Parameters



Deutschland

Telemeter Electronic GmbH

Joseph-Gänsler-Str. 10, 86609 Donauwörth
Tel. +49 906 70693-0, Fax +49 906 70693-50
info@telemeter.de, www.telemeter.info

Schweiz

Telemeter Electronic GmbH

Romanshorneerstr. 117, 8280 Kreuzlingen
Tel. +41 71 6992020, Fax +41 71 6992024
info@telemeter.ch, www.telemeter.info

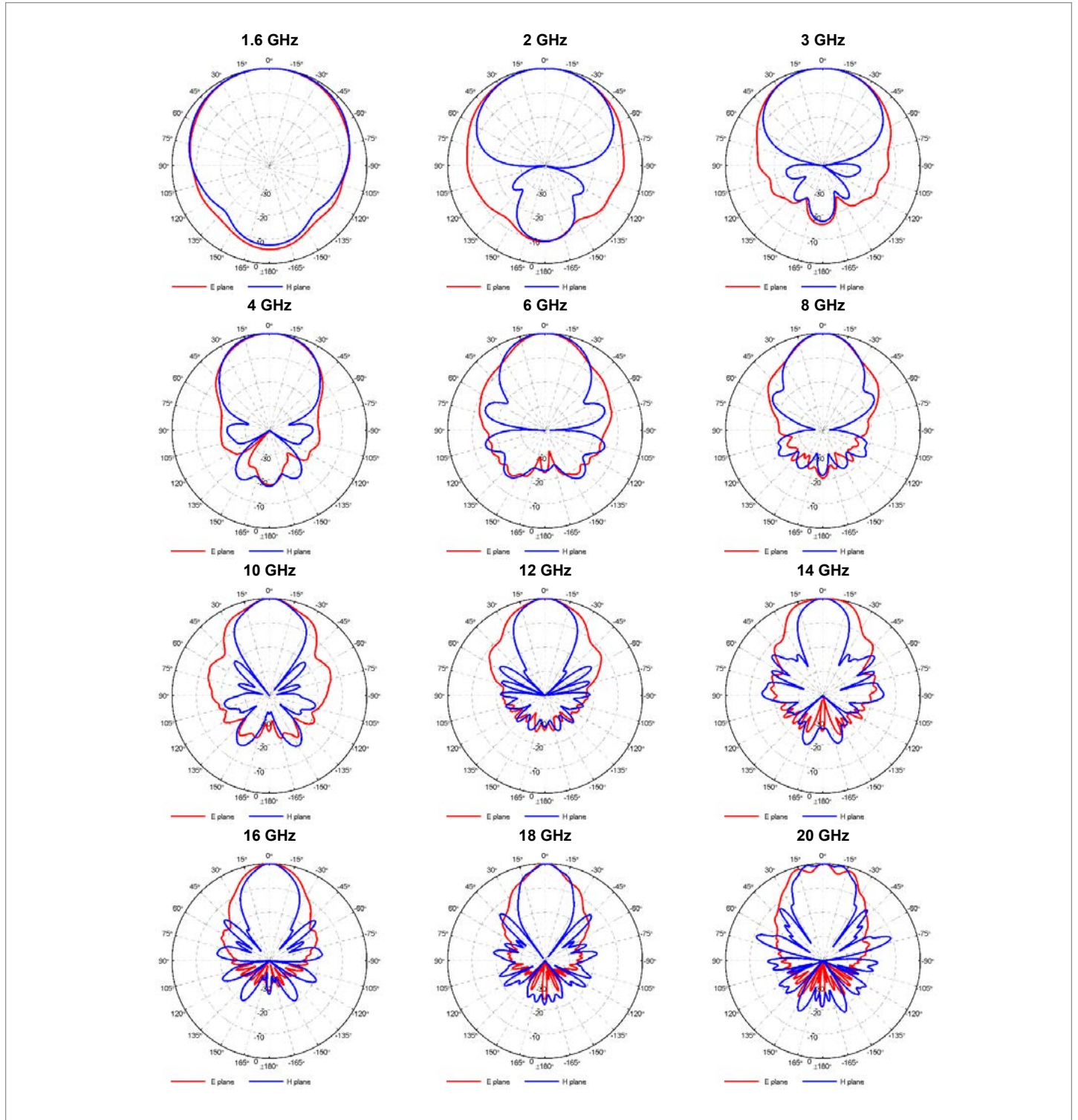
Tschechische Republik

Telemeter Electronic s.r.o.

České Vrbné 2364, 37011 České Budějovice
Tel. +420 38 5310637 und +420 38510143
info@telemeter.cz, www.telemeter.info

Double Ridged Horn Antenna Model DRH20E

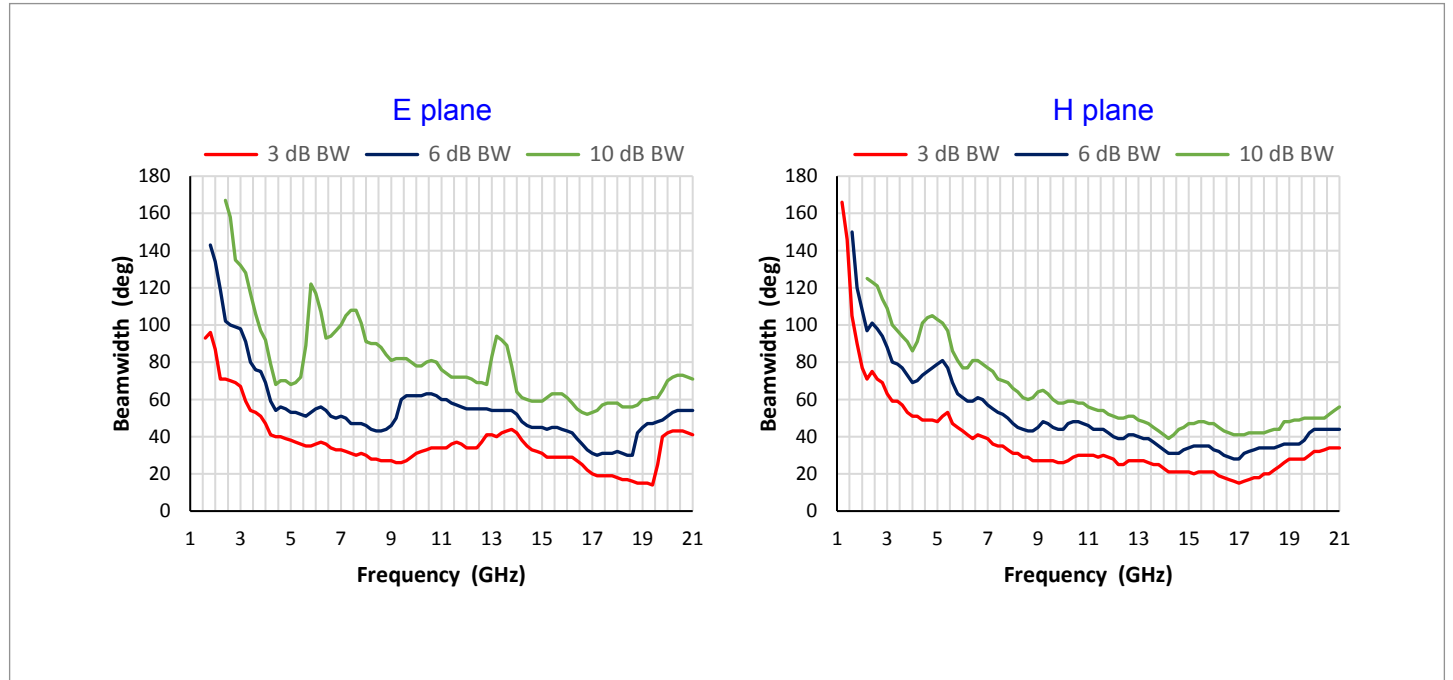
Radiation Patterns



Double Ridged Horn Antenna Model DRH20E



Beamwidth



Deutschland

Telemeter Electronic GmbH
Joseph-Gänsler-Str. 10, 86609 Donauwörth
Tel. +49 906 70693-0, Fax +49 906 70693-50
info@telemeter.de, www.telemeter.info

Schweiz

Telemeter Electronic GmbH
Romanshornerstr. 117, 8280 Kreuzlingen
Tel. +41 71 6992020, Fax +41 71 6992024
info@telemeter.ch, www.telemeter.info

Tschechische Republik

Telemeter Electronic s.r.o.
České Vrbné 2364, 37011 České Budějovice
Tel. +420 38 5310637 und +420 38510143
info@telemeter.cz, www.telemeter.info