

# Double Ridged Horn Antenna Model DRH67

## Electrical Specifications

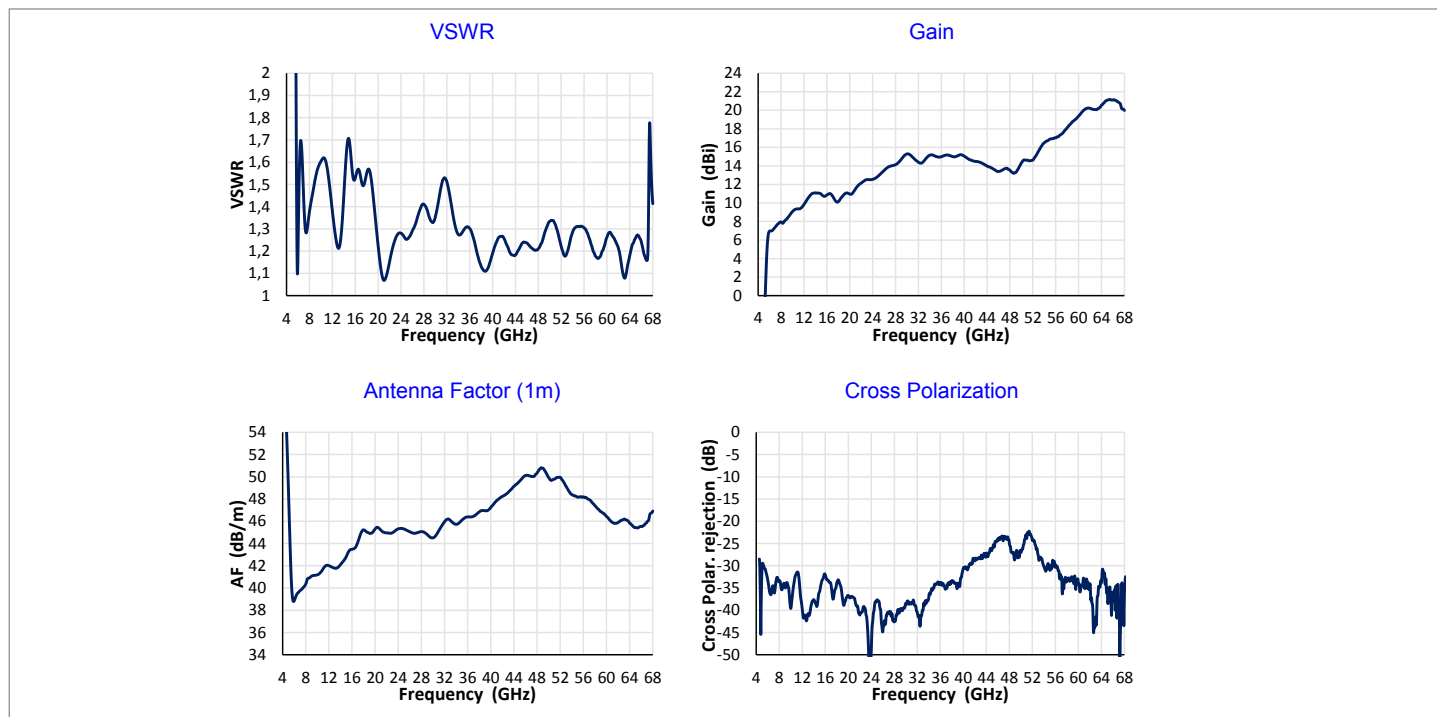
Frequency Range	6 GHz – 67 GHz
VSWR (max.)	< 1.9
Impedance	50 $\Omega$
Connector	1.85mm female
Power (CW / Pulse)	20 W / 40 W

## Physical Specifications

Width	32.7 mm (1.287 in)
Depth	32 mm (1.260 in)
Height	48.5 mm (1.909 in)
Weight	50 g (0.11 lb)

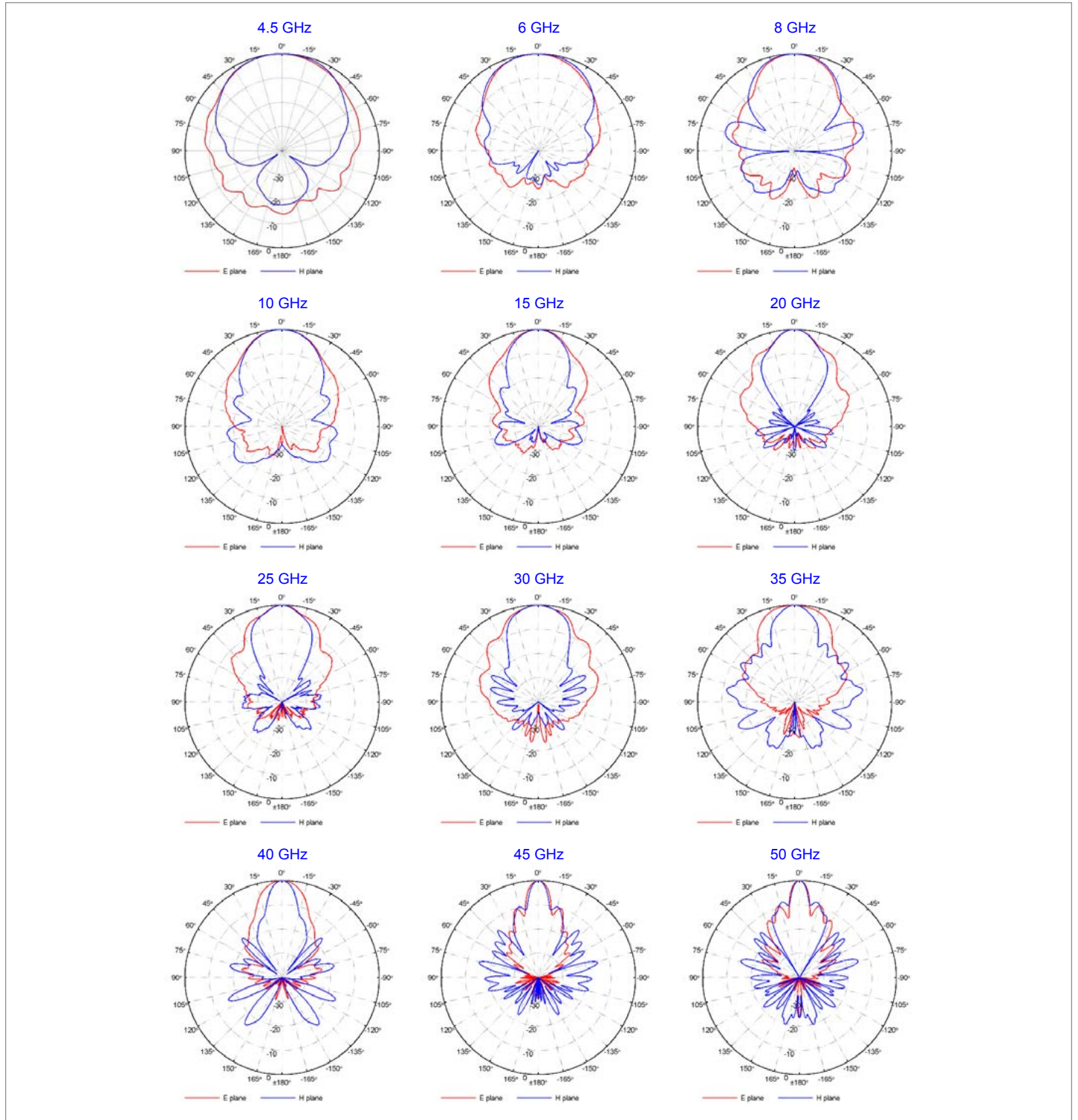


## Typical Parameters



# Double Ridged Horn Antenna Model DRH67

## Radiation Patterns



# Double Ridged Horn Antenna Model DRH67

## Beamwidth

