

# Pyramidal Horn Antenna Model H-A40

## Electrical Specifications

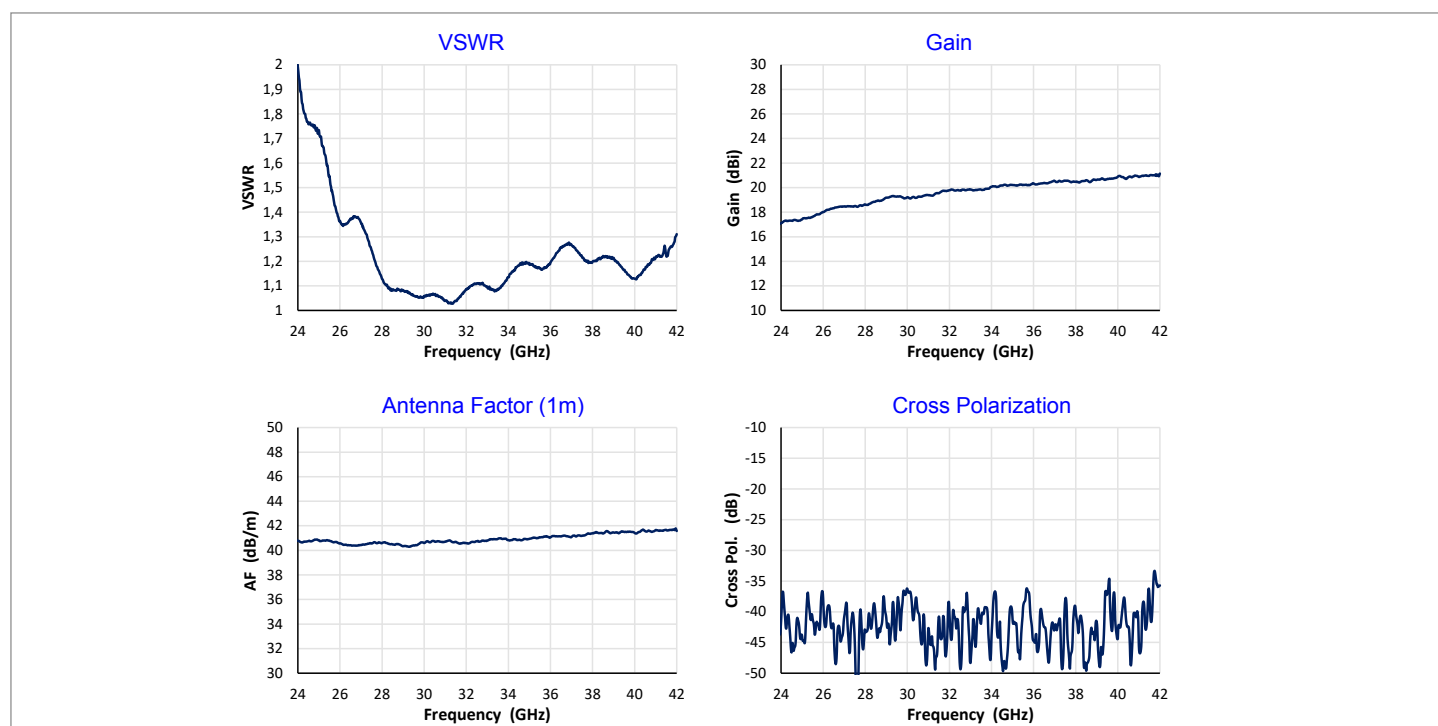
Frequency Range	(26) 28 – 40 GHz
VSWR (max.)	< 1.3
Impedance	50 $\Omega$
Connector	K-female
Power (CW / Pulse)	15 W / 30 W

## Physical Specifications

Width	39.7 mm (1.56 in)
Depth	67.5 mm (2.66 in)
Height	29.0 mm (1.14 in)
Weight	74 g (0.163 lb.)



## Typical Parameters



# Pyramidal Horn Antenna Model H-A40

## Radiation Patterns

