

Pyramidal Horn Antenna Model H-A50

Electrical Specifications

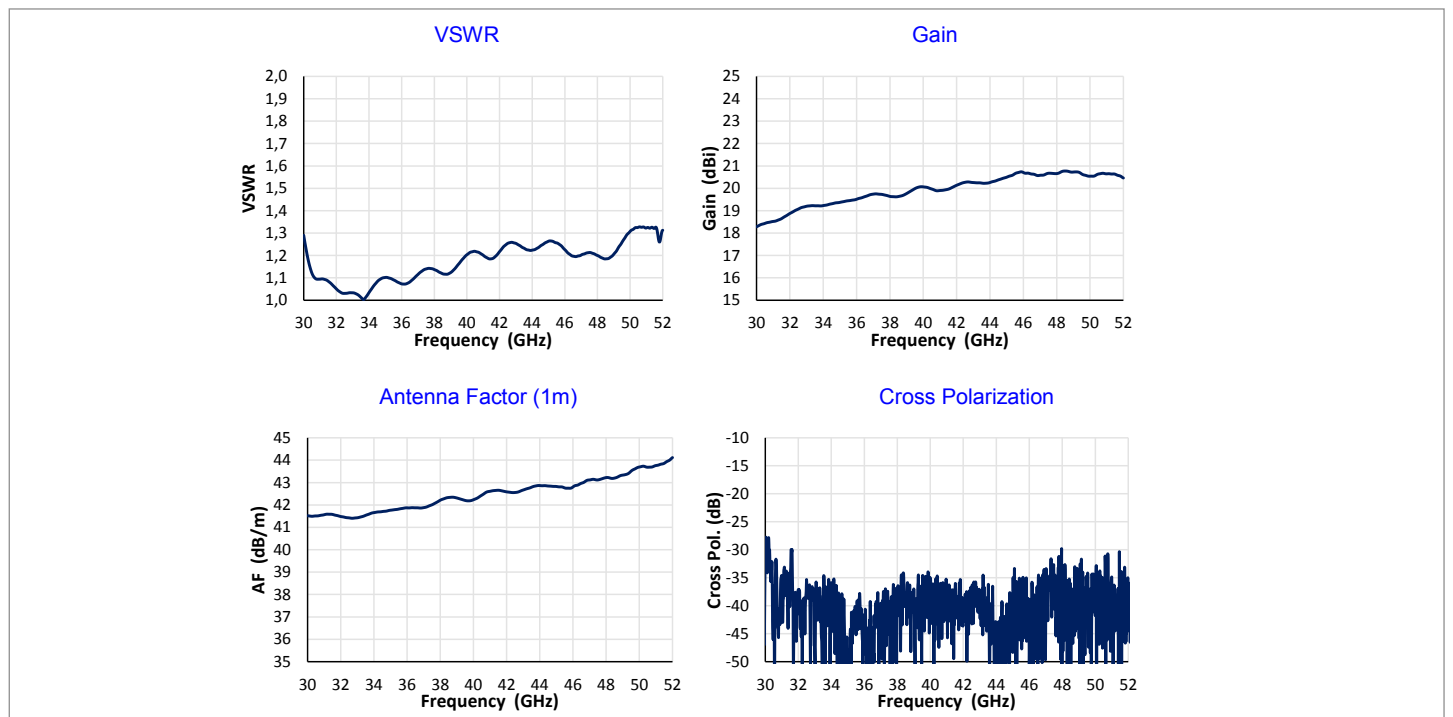
Frequency Range	33 GHz – 50 GHz
VSWR (max.)	< 1.35
Impedance	50 Ω
Connector	2.40 mm female
Power (CW / Pulse)	10 W / 20 W

Physical Specifications

Width	36.4 mm (1.43 in)
Depth	25.9 mm (1.02 in)
Height	58.8 mm (2.32 in)
Weight	125 g (0.28 lb.)



Typical Parameters



Pyramidal Horn Antenna Model H-A50

Radiation Patterns

