

# Quad Ridged Horn Antenna Model QRH11

## Electrical Specifications

|                    |                       |
|--------------------|-----------------------|
| Frequency Range    | 0.73 GHz – 11 GHz     |
| VSWR (max.)        | < 2,45                |
| Impedance          | 50 $\Omega$           |
| Connector          | 2 $\times$ SMA-female |
| Power (CW / Pulse) | 50 W / 100 W          |

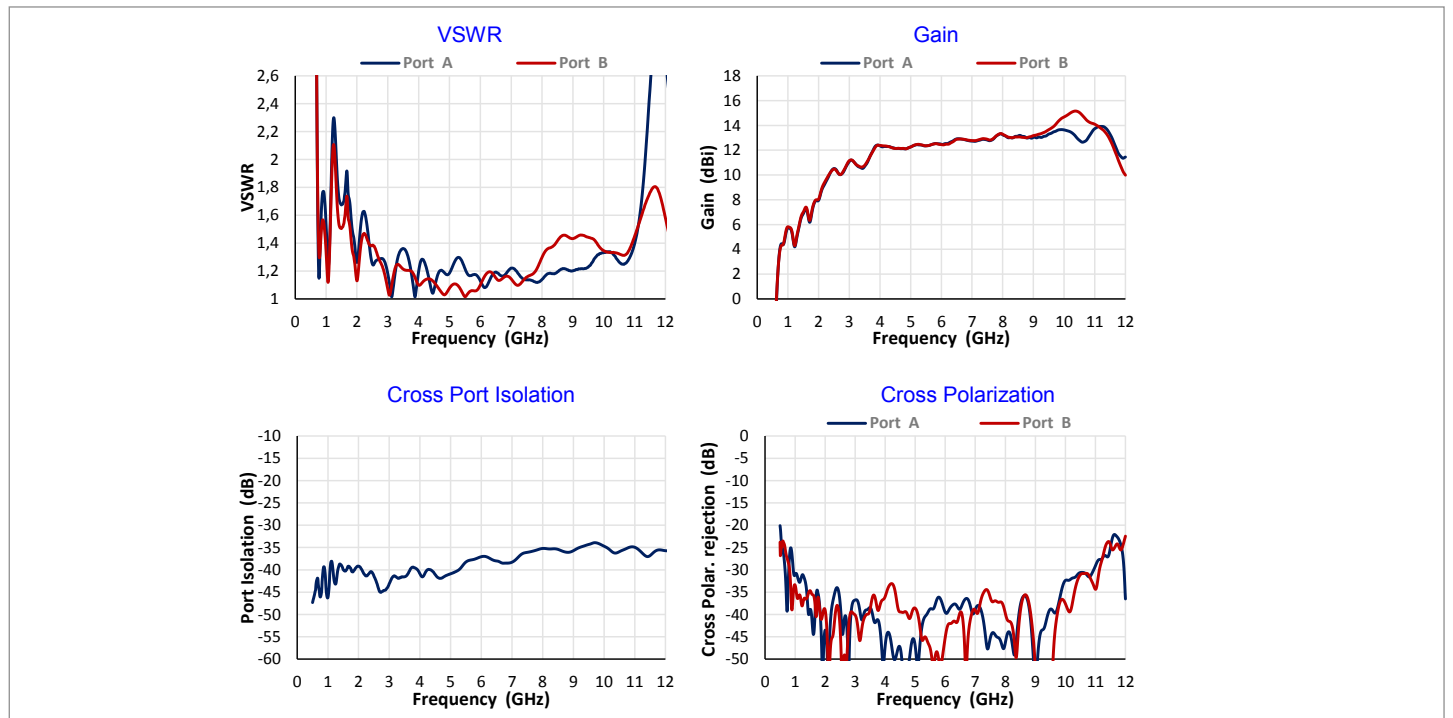
## Physical Specifications

|        |                   |
|--------|-------------------|
| Width  | 180 mm (7.09 in)  |
| Depth  | 180 mm (7.09 in)  |
| Height | 240 mm (9.45 in)  |
| Weight | 1.03 kg (2.28 lb) |



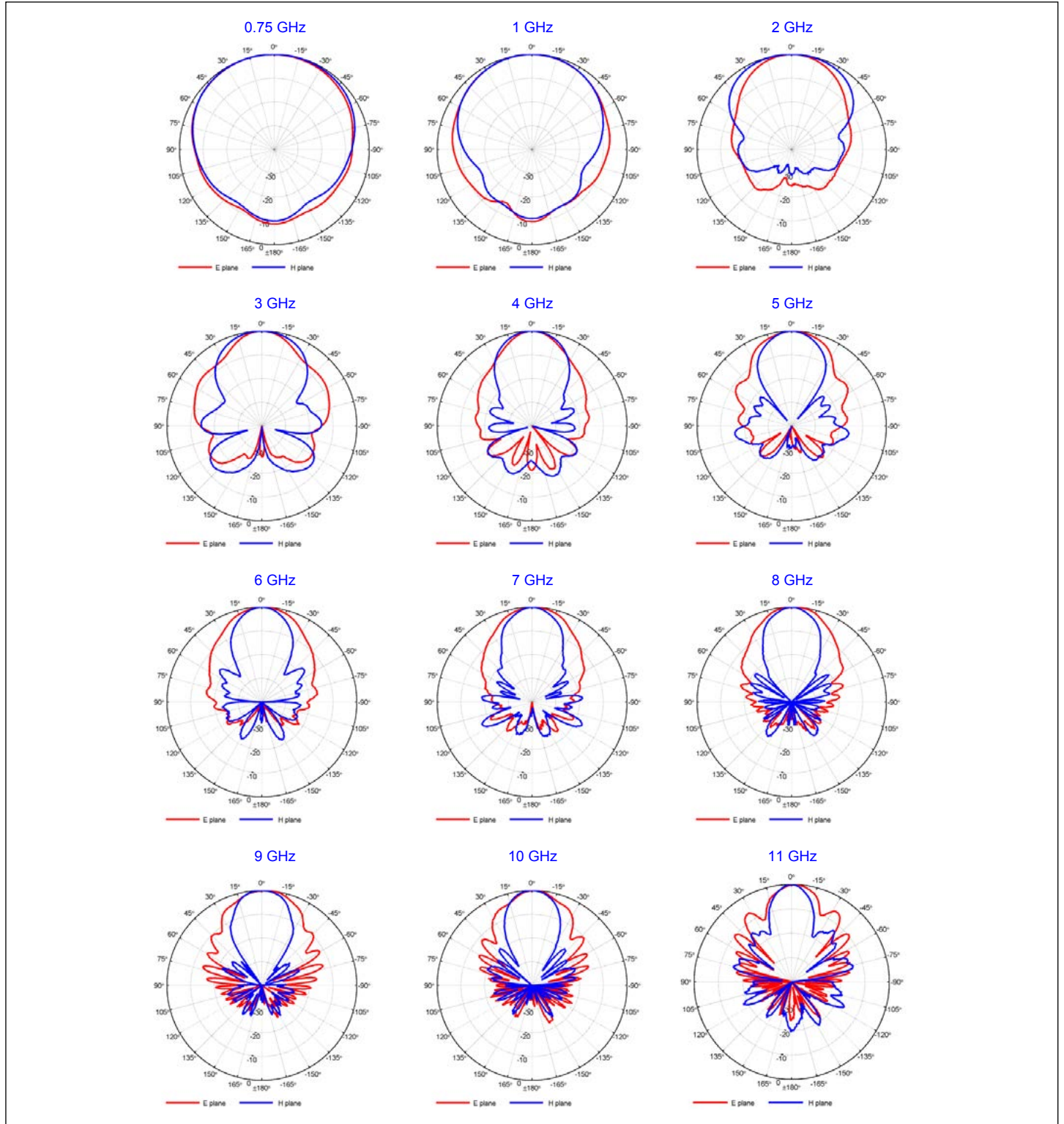
- Linear or circular polarization (with hybrid)

## Typical Parameters



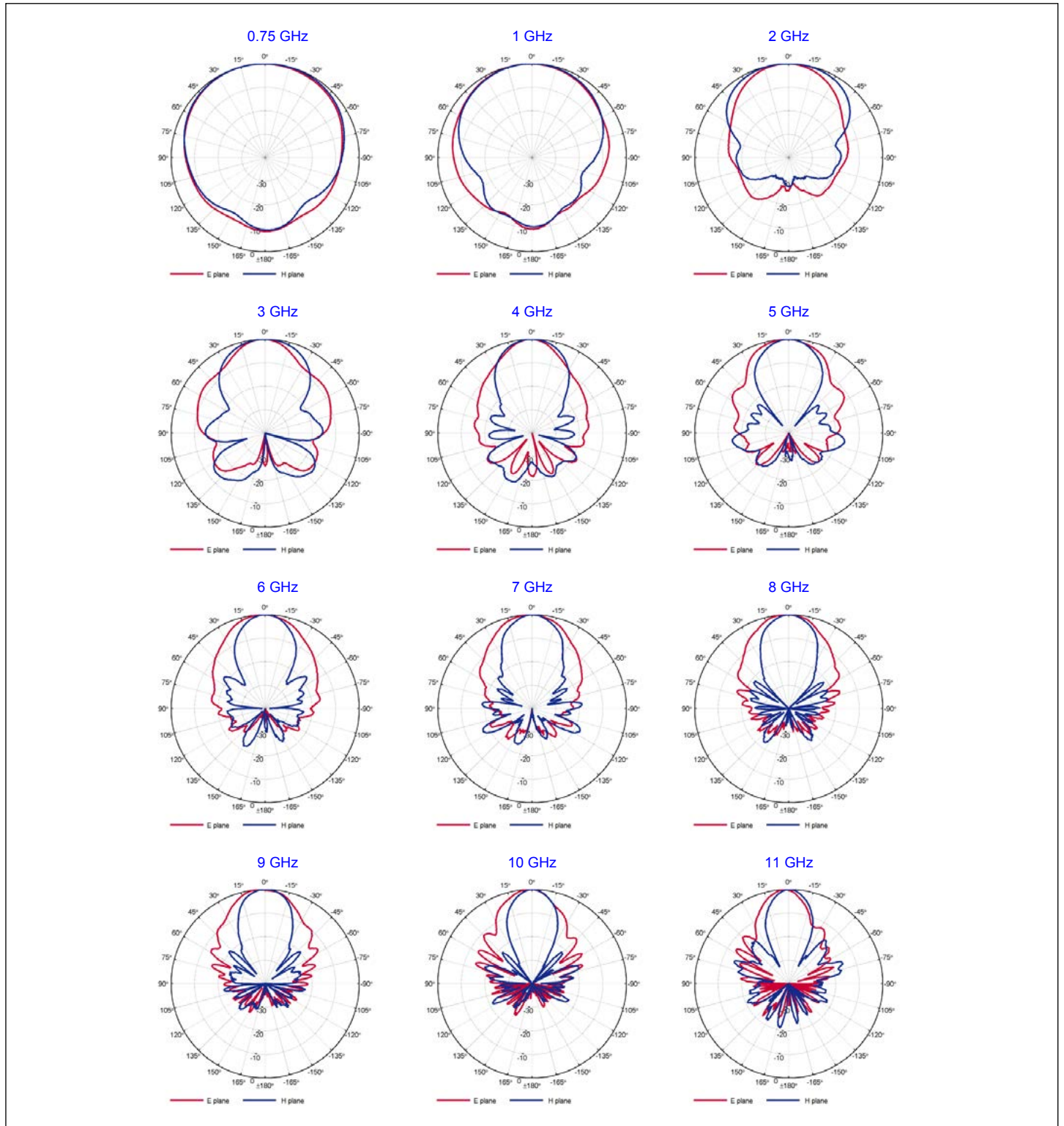
# Quad Ridged Horn Antenna Model QRH11

## Port A – Radiation Patterns



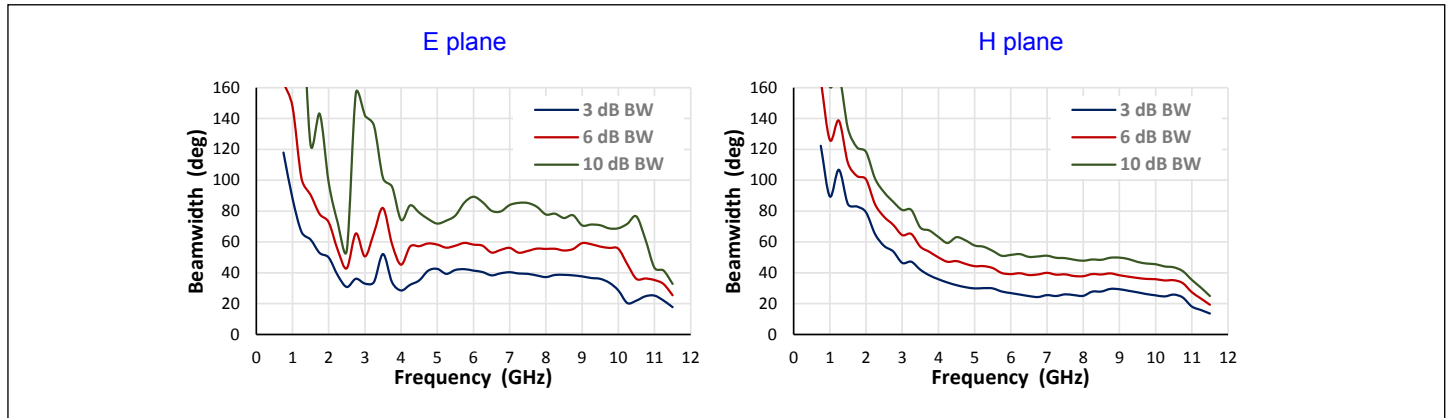
# Quad Ridged Horn Antenna Model QRH11

## Port B – Radiation Patterns



# Quad Ridged Horn Antenna Model QRH11

## Radiation Patterns – Port A



## Radiation Patterns – Port B

