

Quad Ridged Horn Antenna Model QRH18

Electrical Specifications

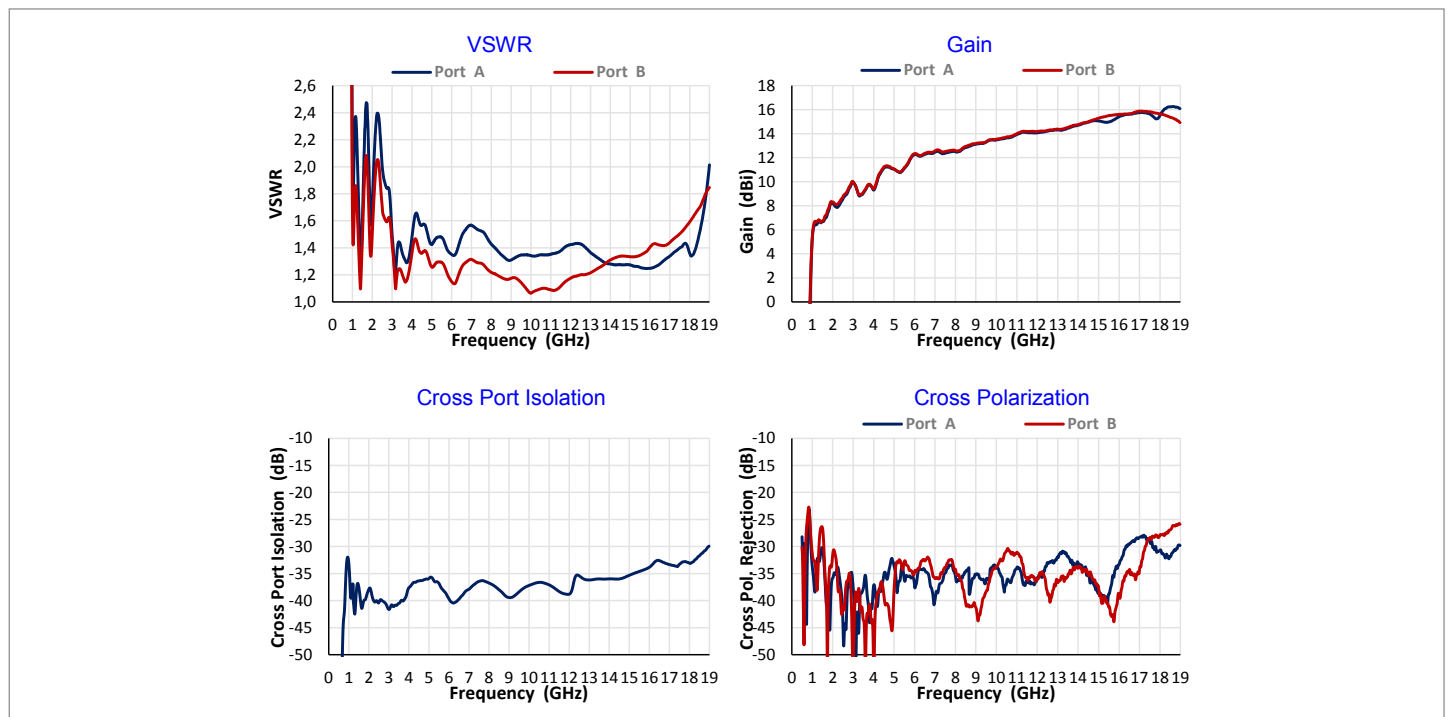
Frequency Range	1 GHz – 18 GHz
VSWR (max.)	< 2.5
Impedance	50 Ω
Connector	2 \times SMA-female
Power (CW / Pulse)	100 W / 170 W

Physical Specifications

Width	230.6 mm (9.079 in)
Depth	230.6 mm (9.079 in)
Height	229.1 mm (9.020 in)
Weight	650 g (1.433 lb)

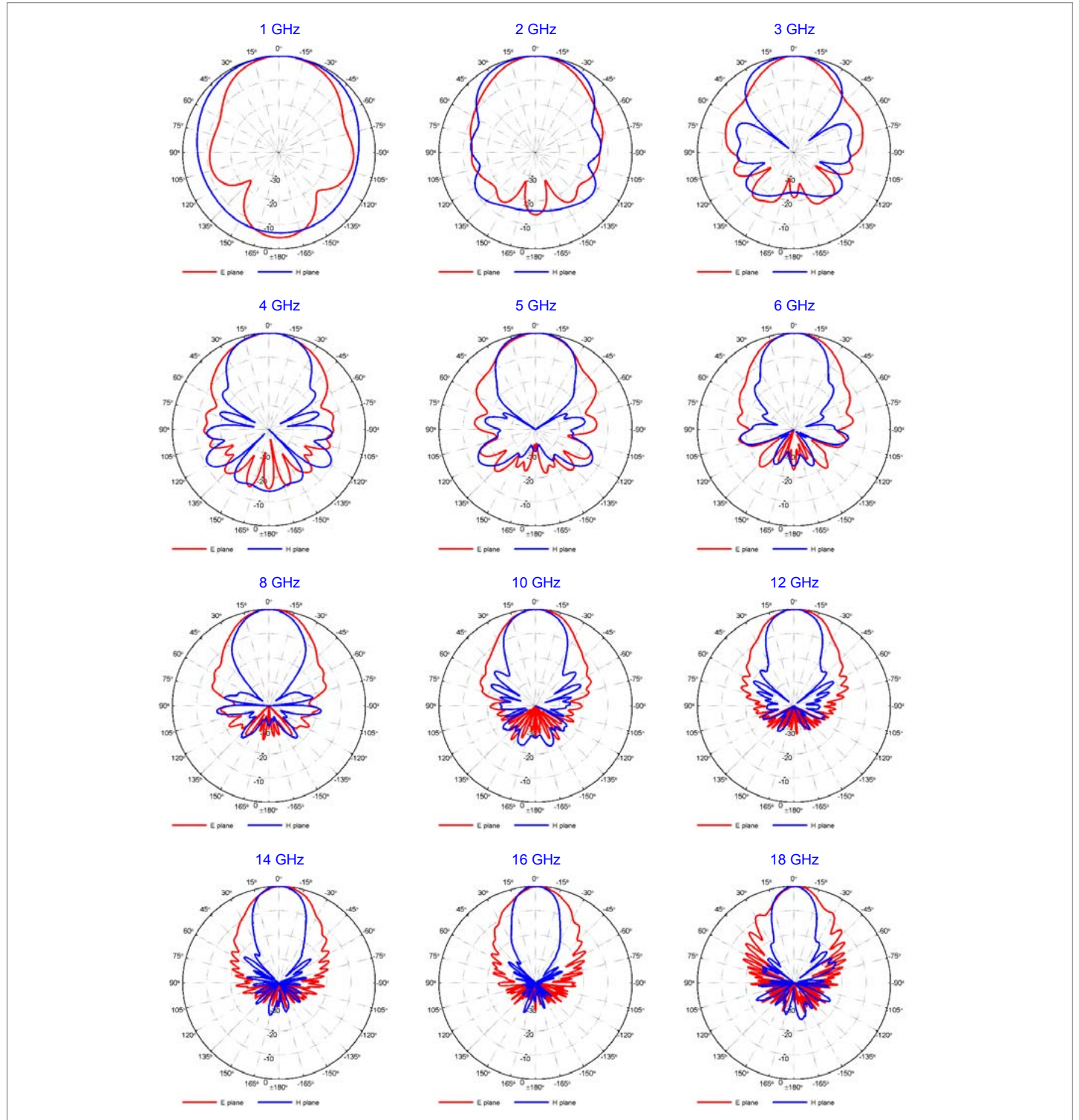


Typical Parameters



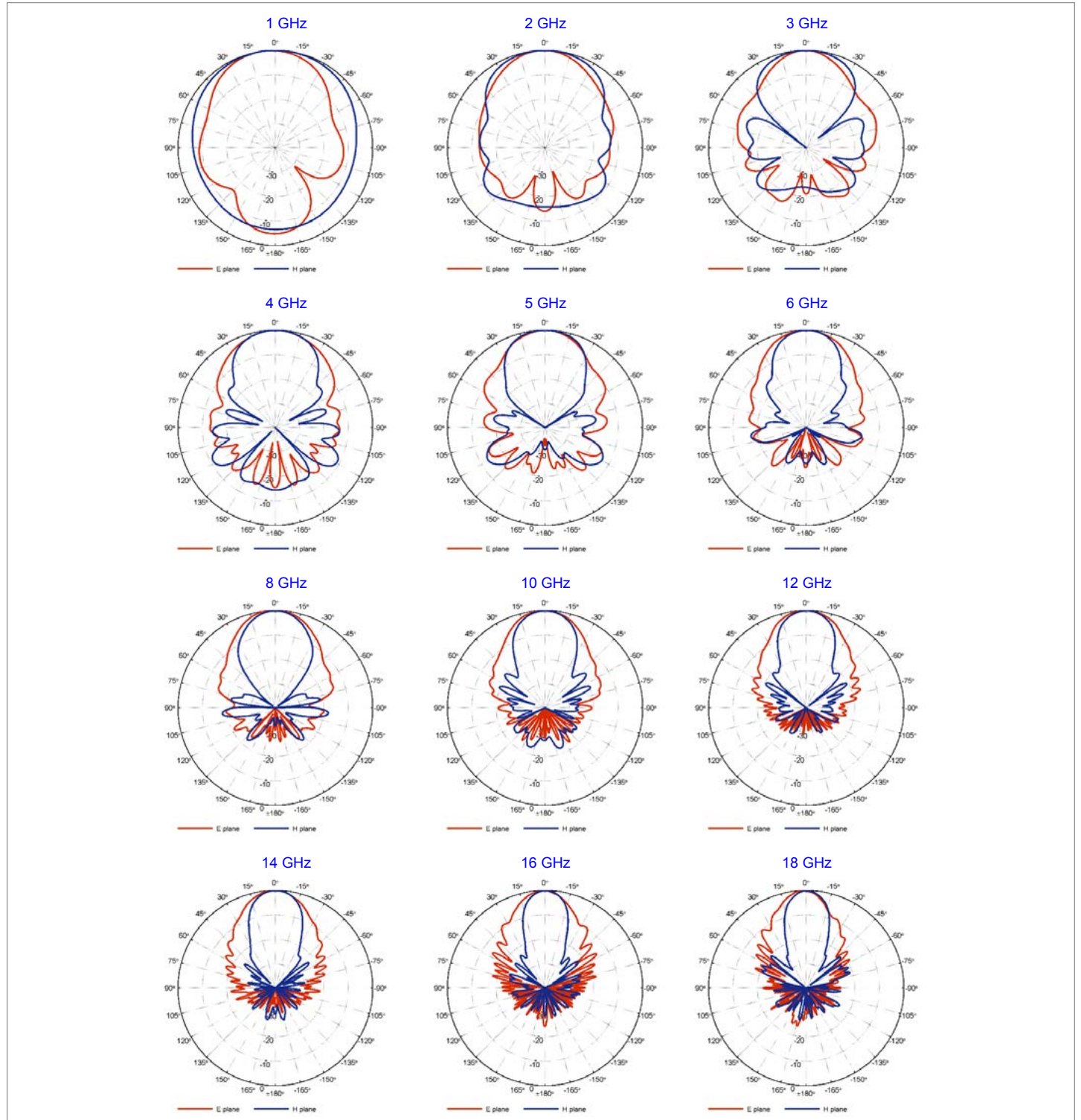
Quad Ridged Horn Antenna Model QRH18

Port A – Radiation Patterns



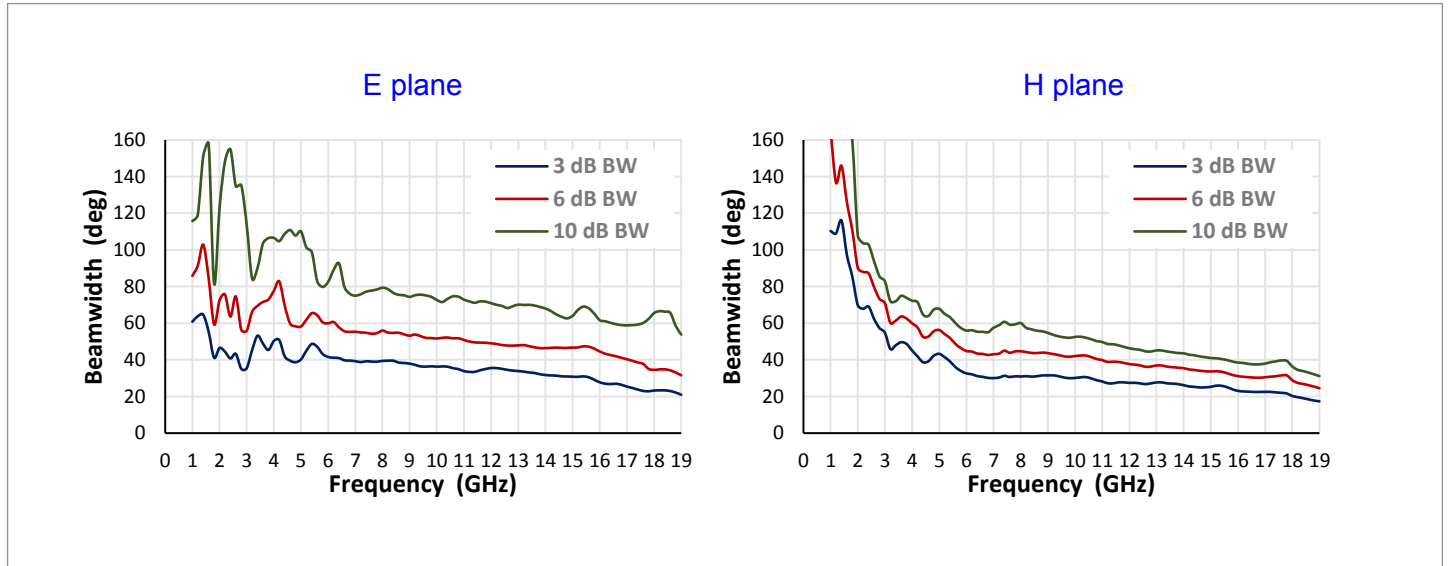
Quad Ridged Horn Antenna Model QRH18

Port B – Radiation Patterns



Quad Ridged Horn Antenna Model QRH18

Beamwidth – Port A



Beamwidth – Port B

