

Quad Ridged Horn Antenna Model QRH300

Electrical Specifications

Frequency Range	0.3 GHz – 4.5 GHz
VSWR (max.)	< 2.2
Impedance	50 Ω
Connector	2 x N-female
Power (CW / Pulse)	200 W / 400 W

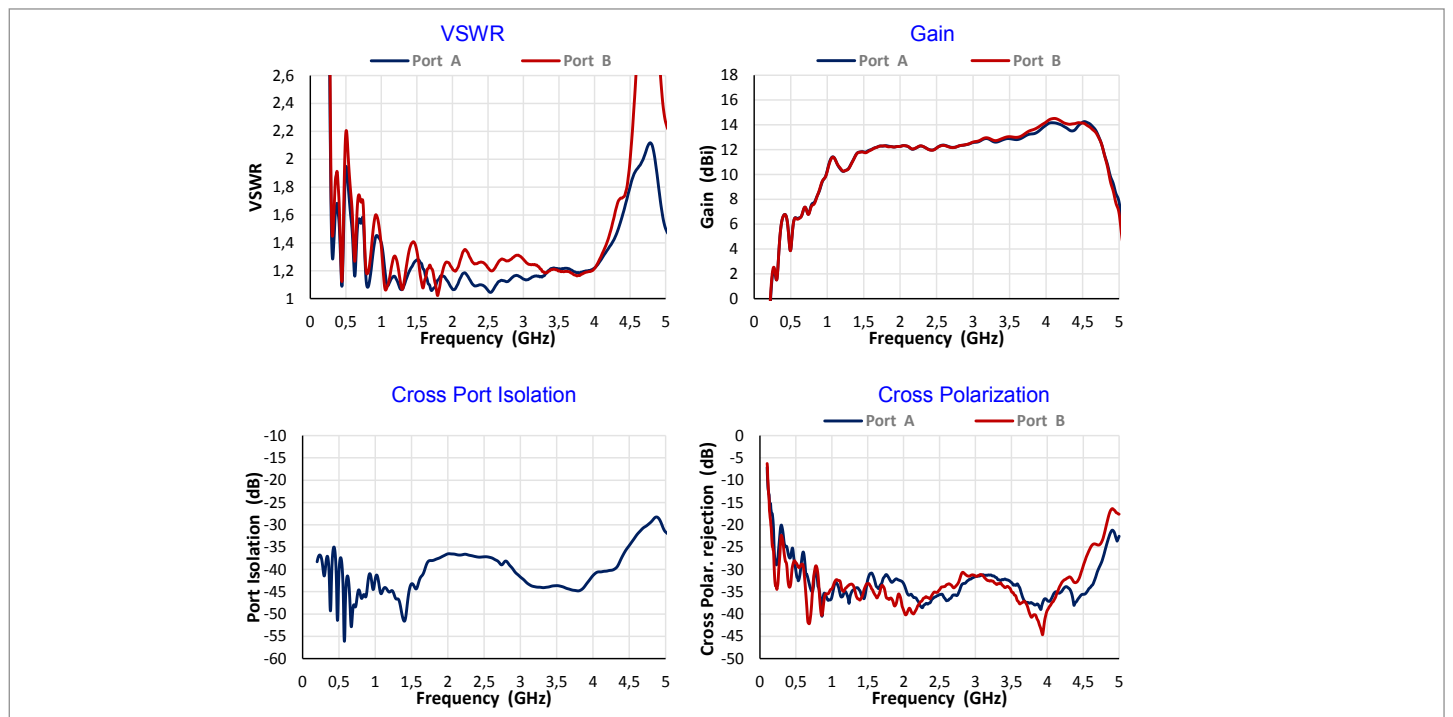
Physical Specifications

Width	450 mm (17.72 in)
Depth	450 mm (17.72 in)
Height	570 mm (22.44 in)
Weight	9.0 kg (19.85 lb)



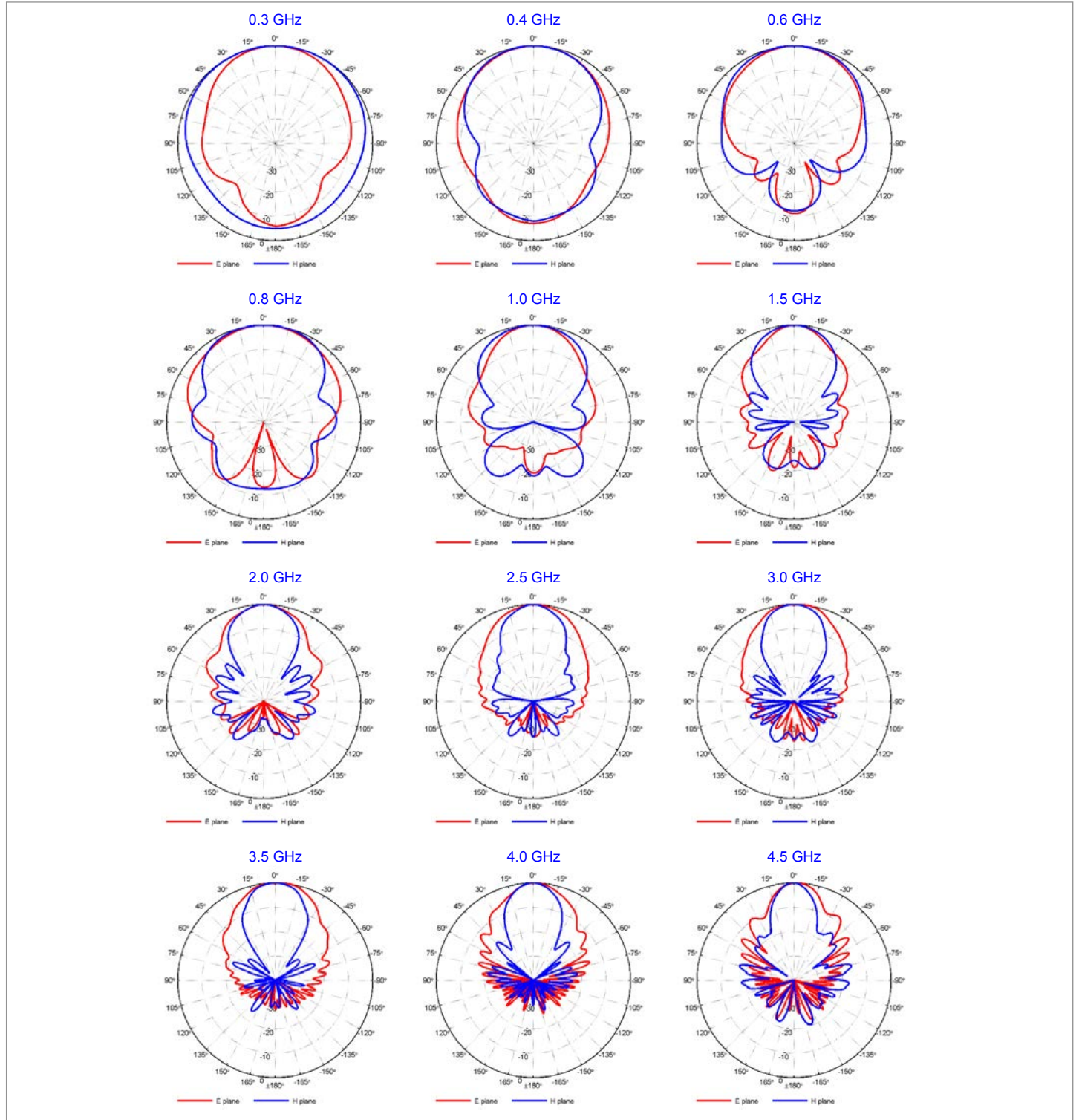
- Linear or circular polarization (with hybrid) Linear or circular polarization (with hybrid)

Typical Parameters



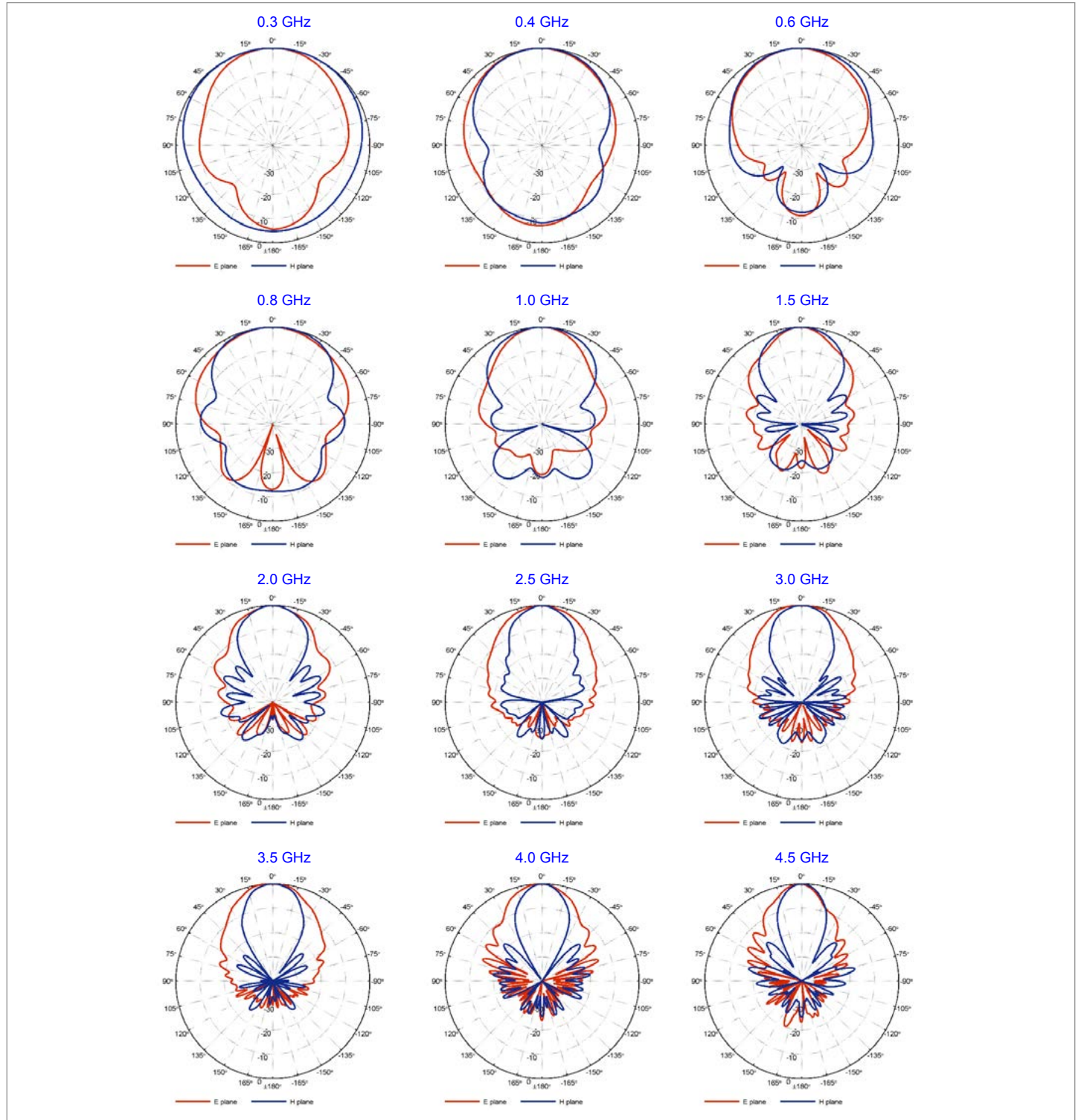
Quad Ridged Horn Antenna Model QRH300

PORT A - Radiation Patterns



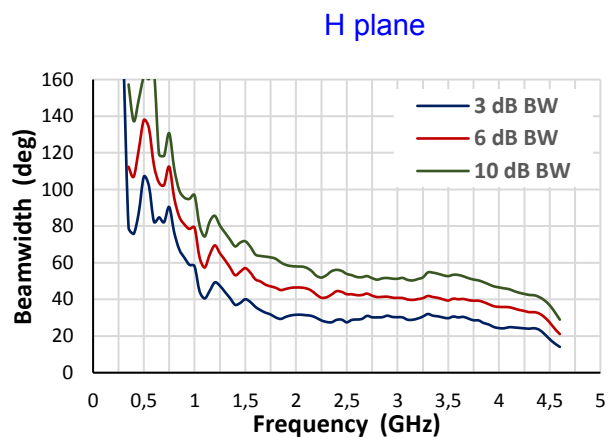
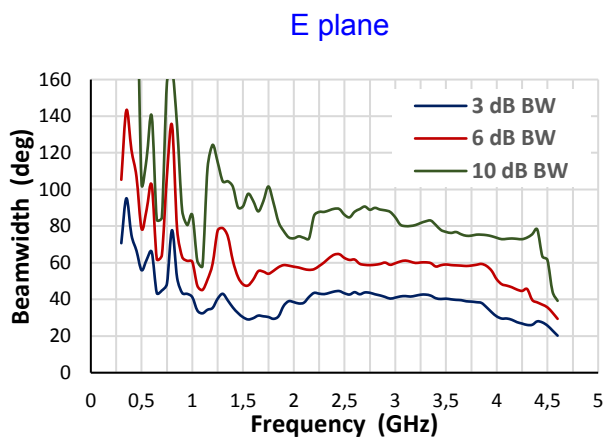
Quad Ridged Horn Antenna Model QRH300

PORT B - Radiation Patterns



Quad Ridged Horn Antenna Model QRH300

Beamwidth – Port A



Beamwidth – Port B

