

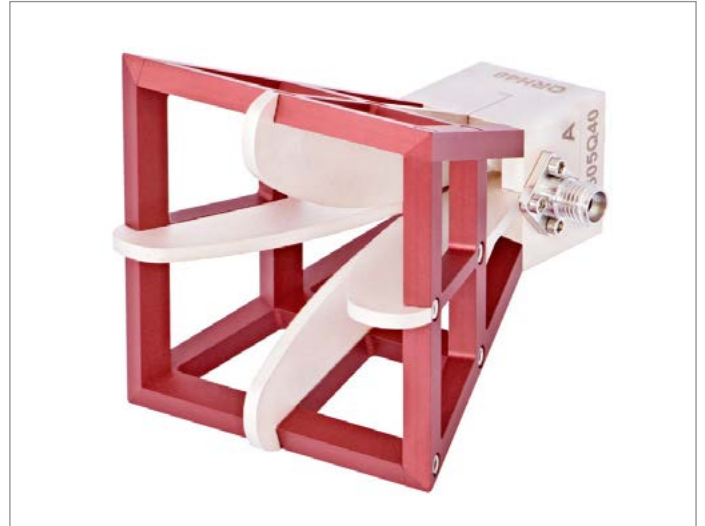
Quad Ridged Horn Antenna Model QRH40

Electrical Specifications

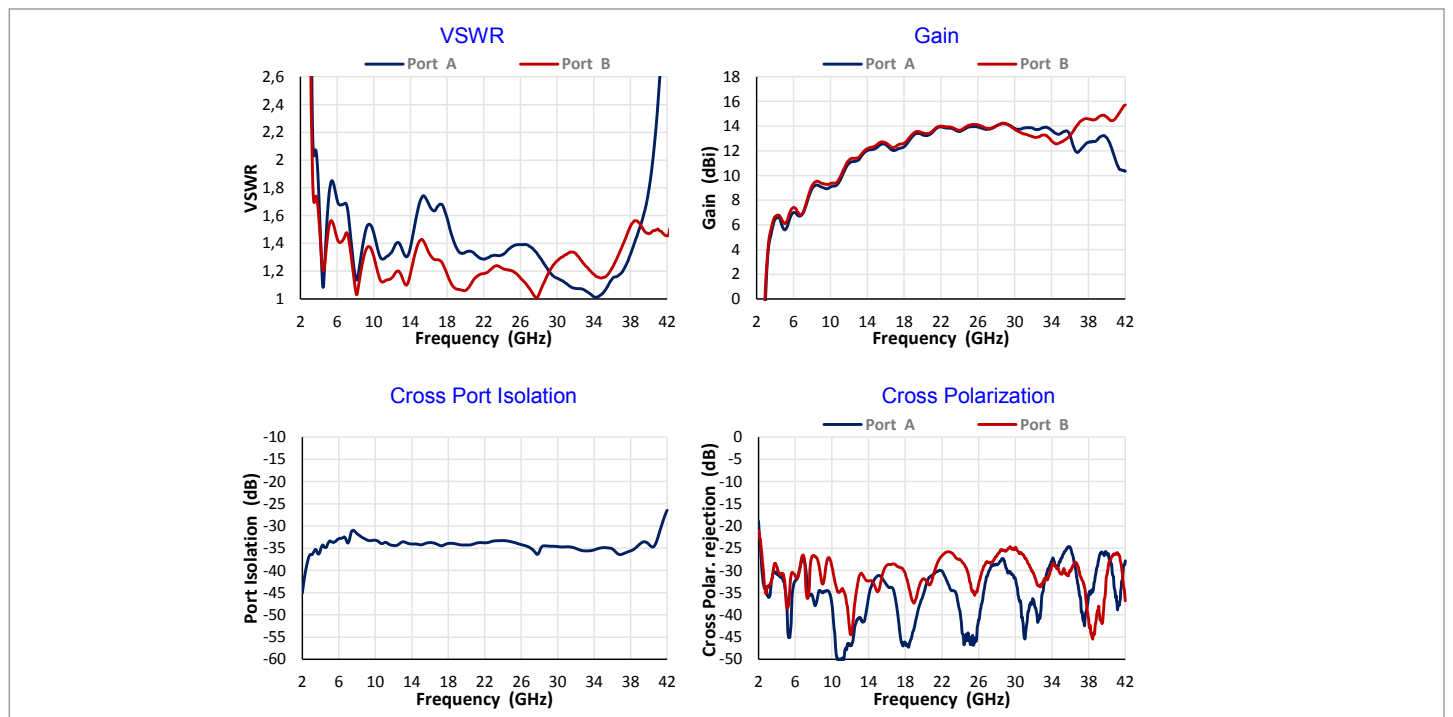
Frequency Range	4 GHz – 40 GHz
VSWR (max.)	< 2.4
Impedance	50 Ω
Connector	2 x K-female
Power (CW / Pulse)	10 W / 20 W

Physical Specifications

Width	53 mm (2.09 in)
Depth	53 mm (2.09 in)
Height	68 mm (2.68 in)
Weight	68 g (0.15 lb)

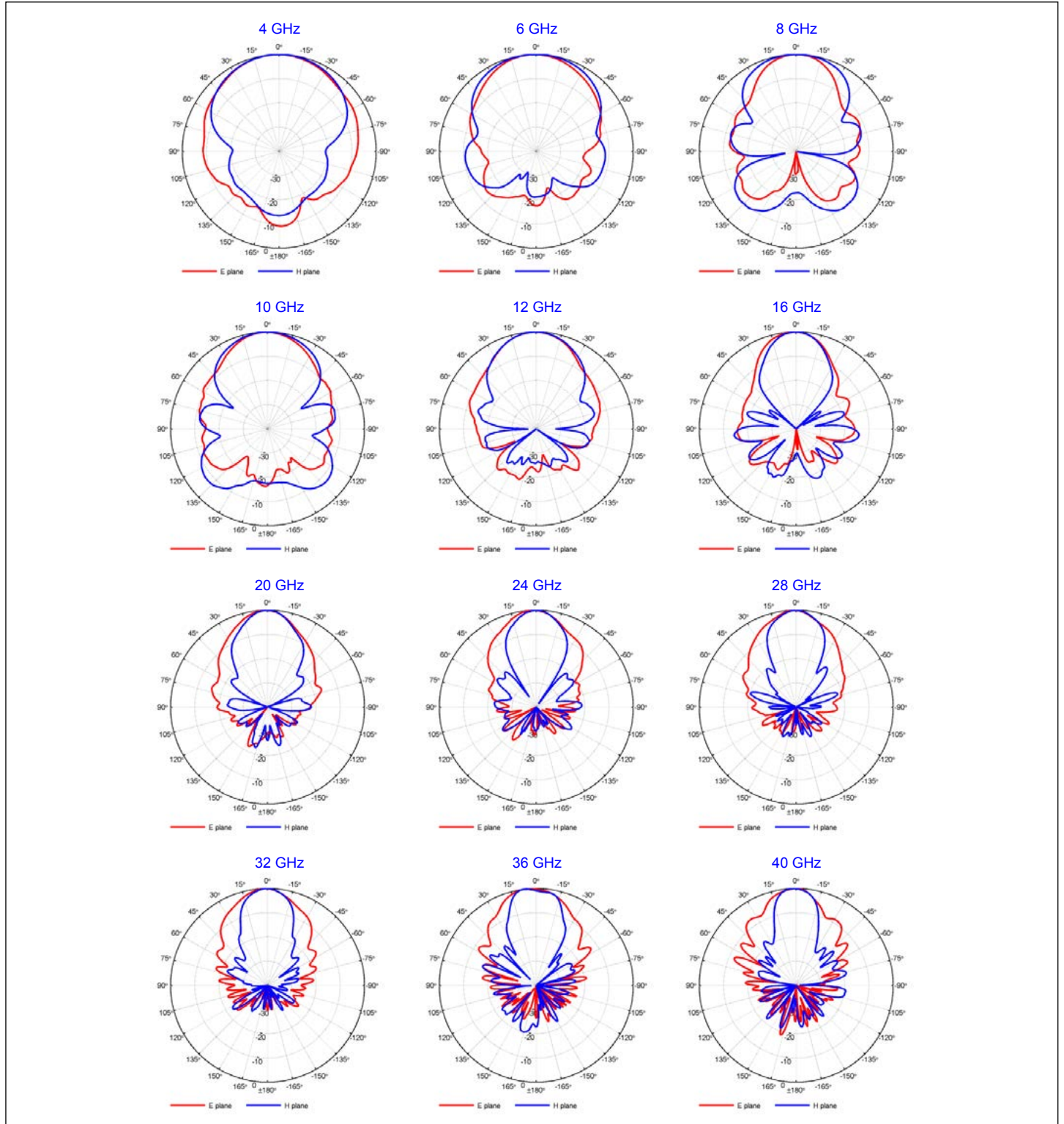


Typical Parameters



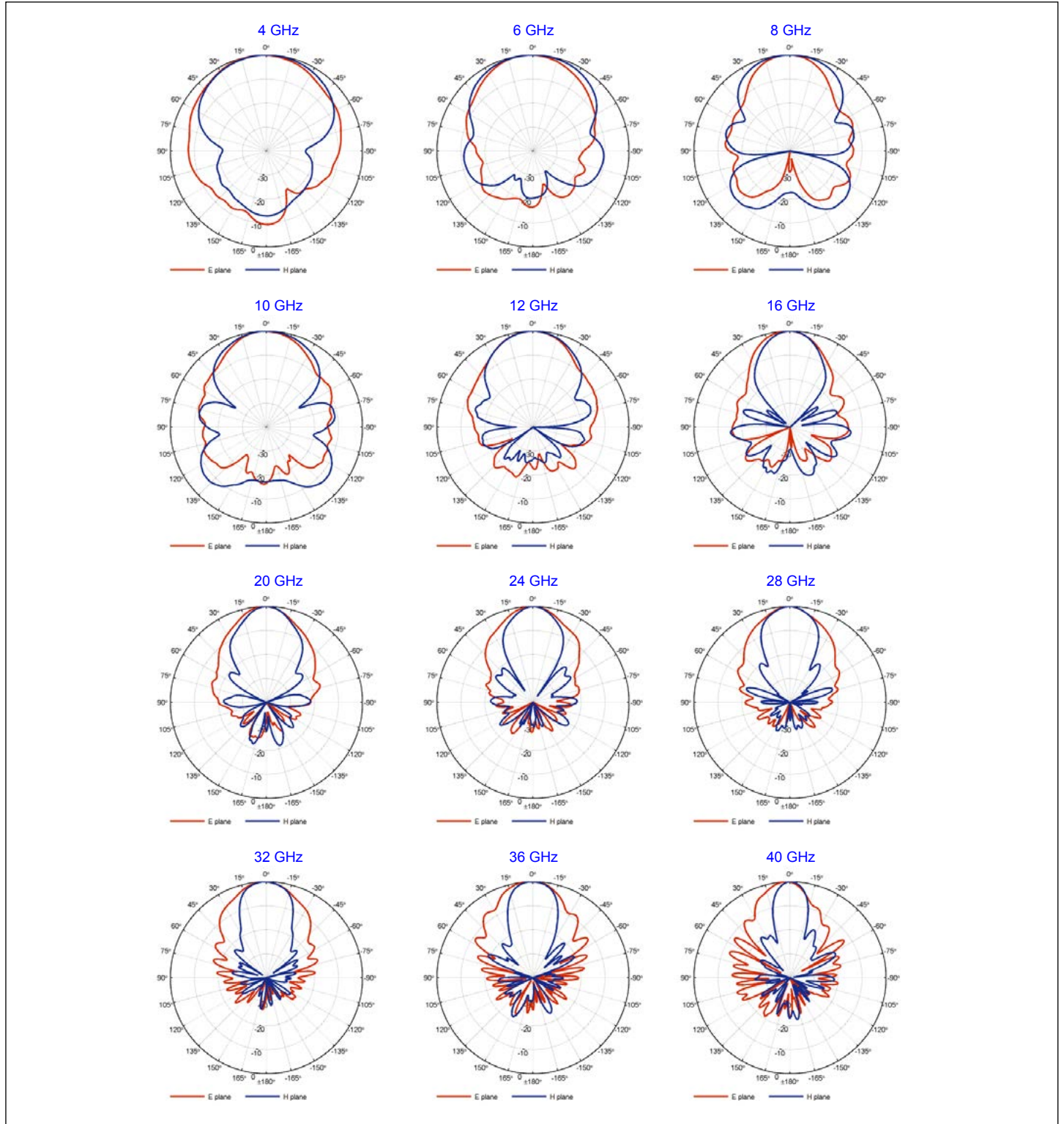
Quad Ridged Horn Antenna Model QRH40

Port A – Radiation Patterns



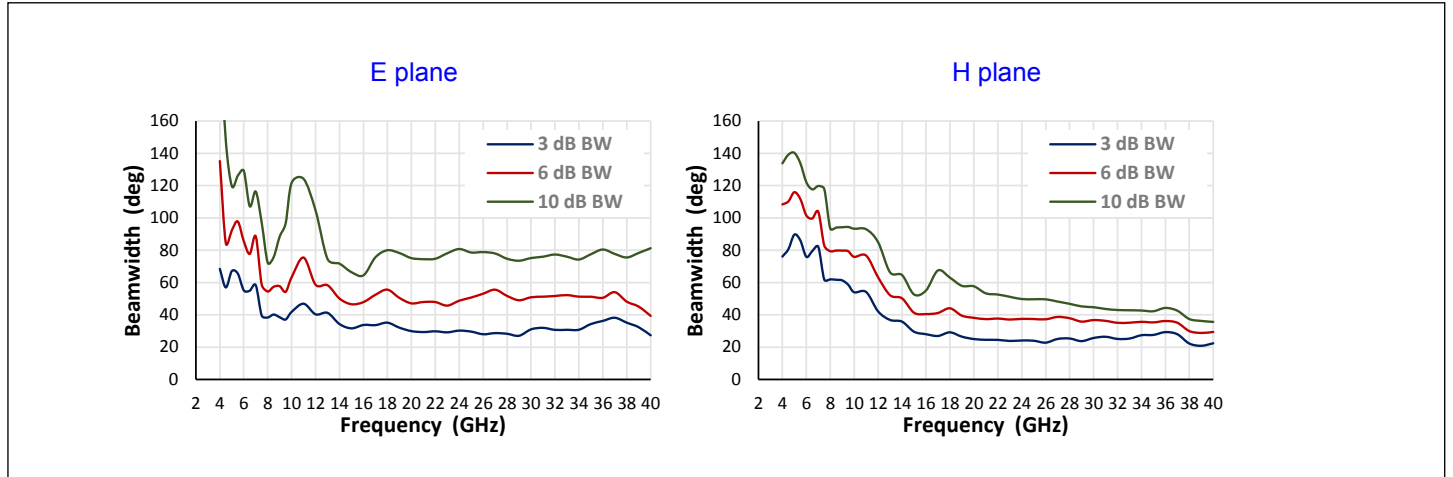
Quad Ridged Horn Antenna Model QRH40

Port B – Radiation Patterns



Quad Ridged Horn Antenna Model QRH40

Beamwidth – Port A



Beamwidth – Port B

