

Quad Ridged Horn Antenna Model QRH400

Electrical Specifications

Frequency Range	0.4 GHz – 6 GHz
VSWR (max.)	< 2.1 : 1
Impedance	50 Ω
Connector	2 \times N-female
Power (CW / Pulse)	50 W / 100 W

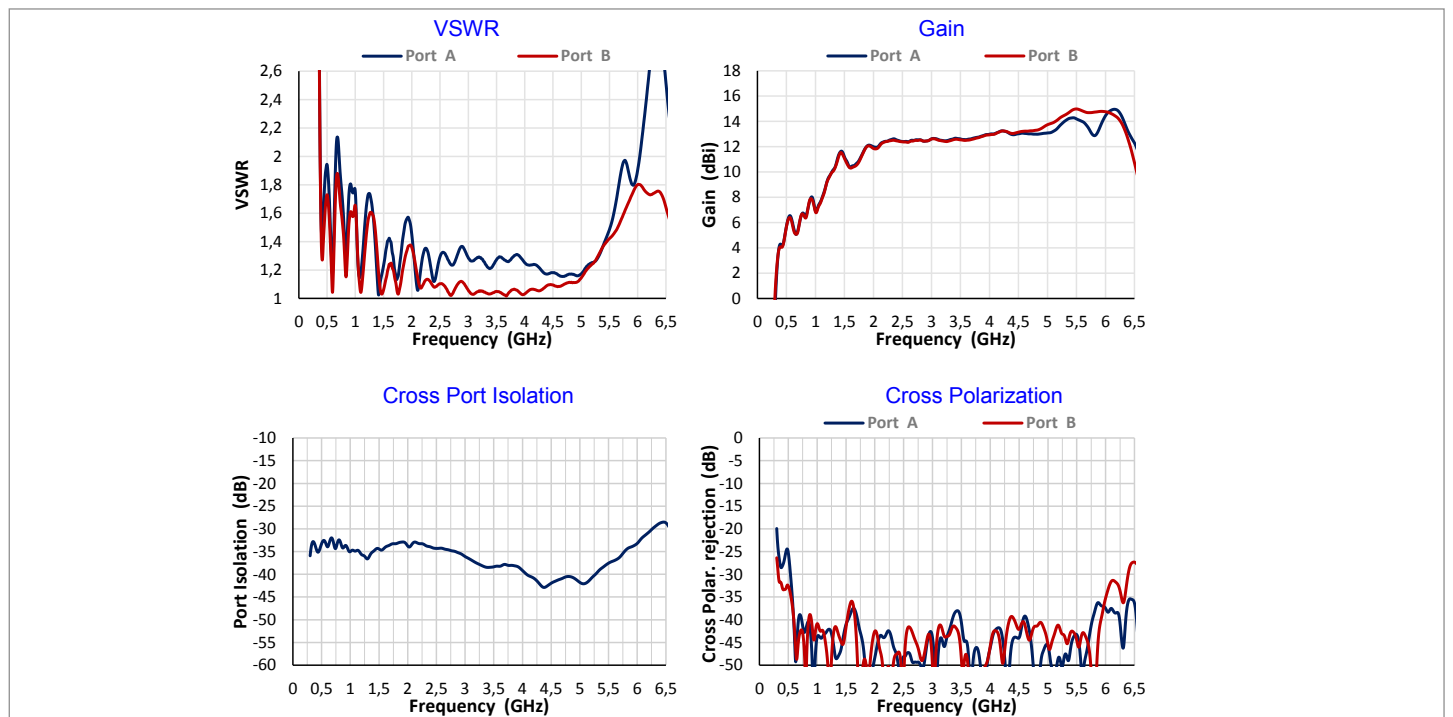
Physical Specifications

Width	33.5 cm (13.19 in)
Depth	33.5 cm (13.19 in)
Height	43.3 cm (17.05 in)
Weight	4.0 kg (8.82 lb)



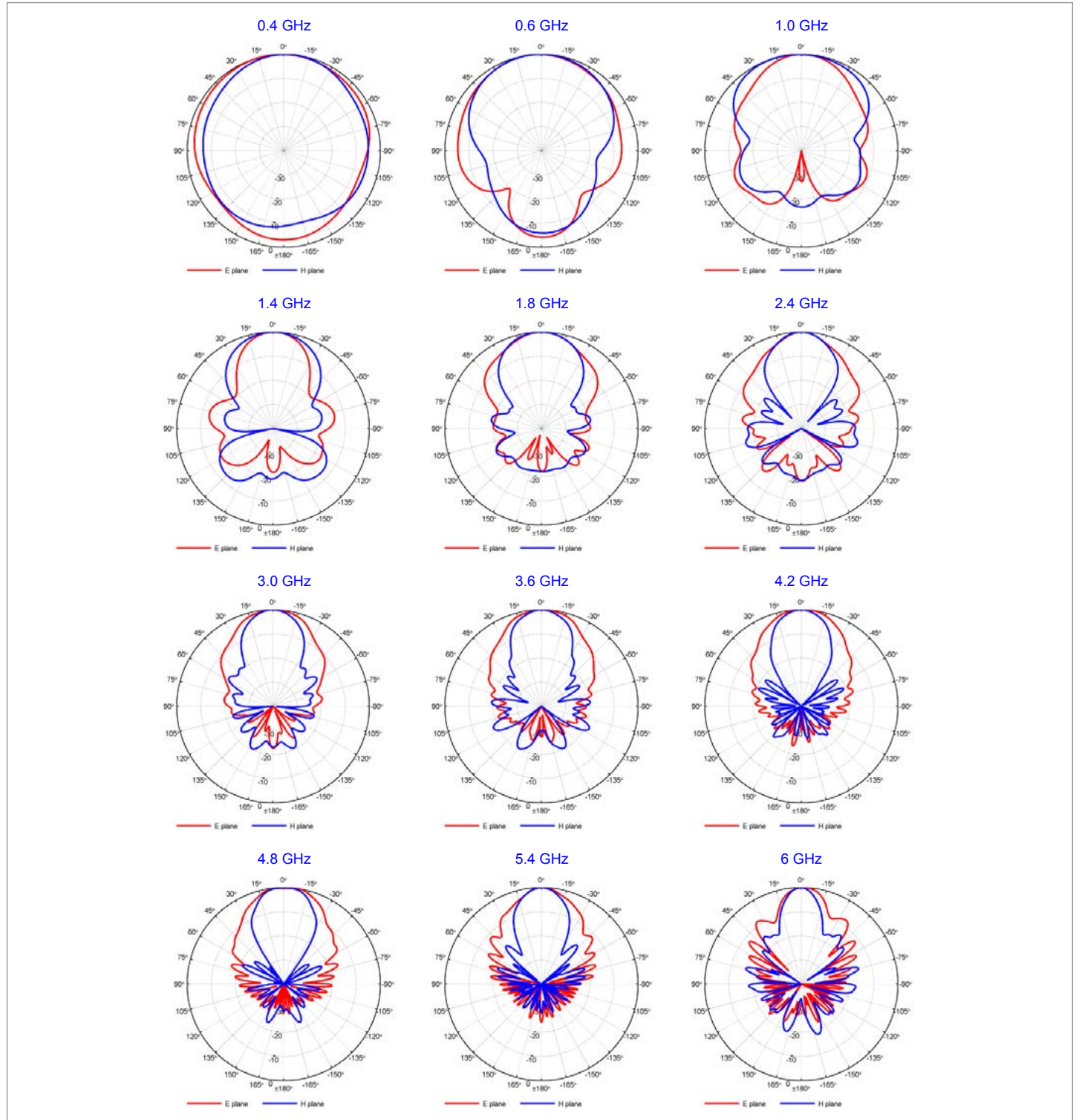
- Linear or circular polarization (with hybrid)

Typical Parameters



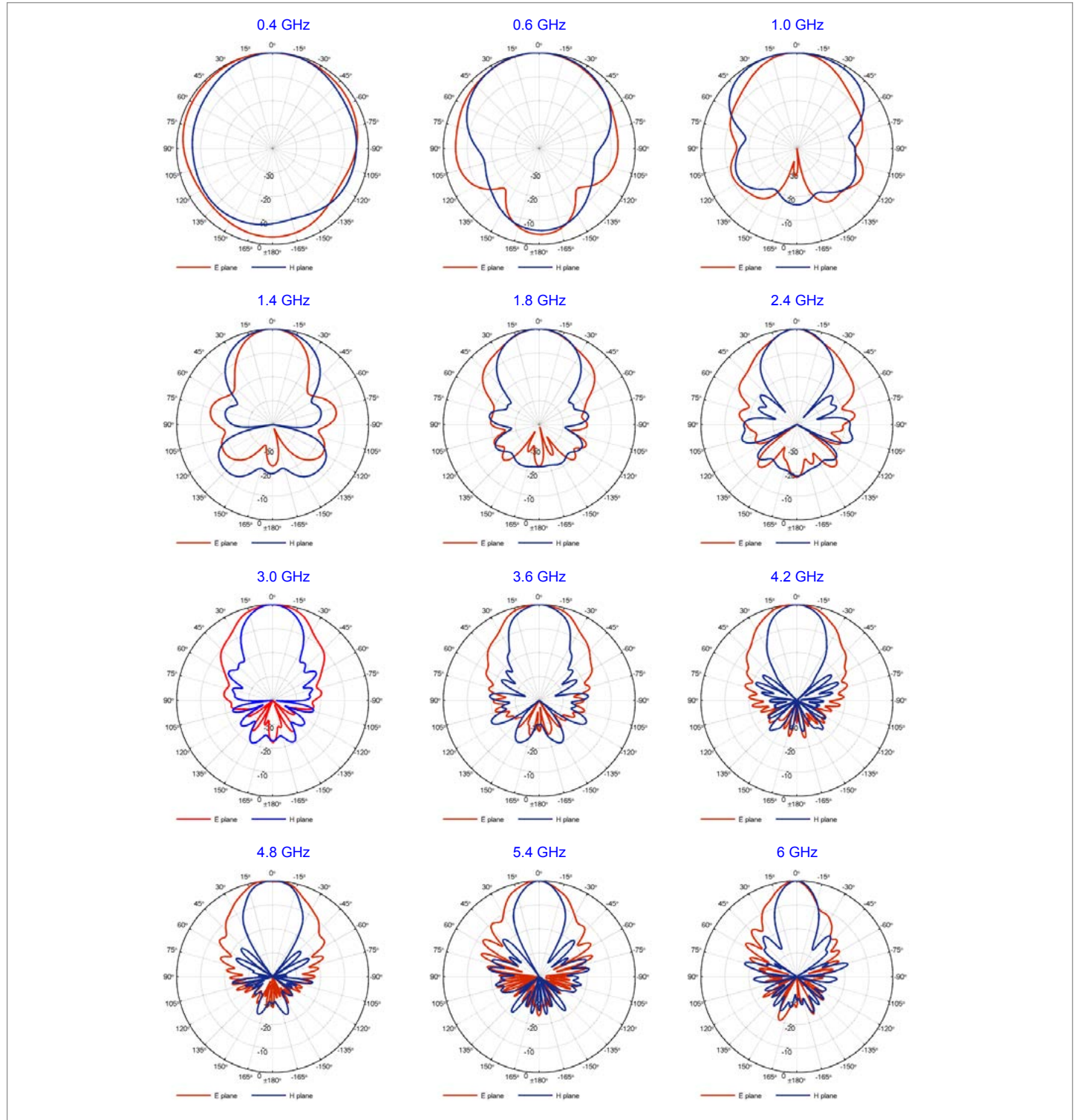
Quad Ridged Horn Antenna Model QRH400

Port A – Radiation Patterns



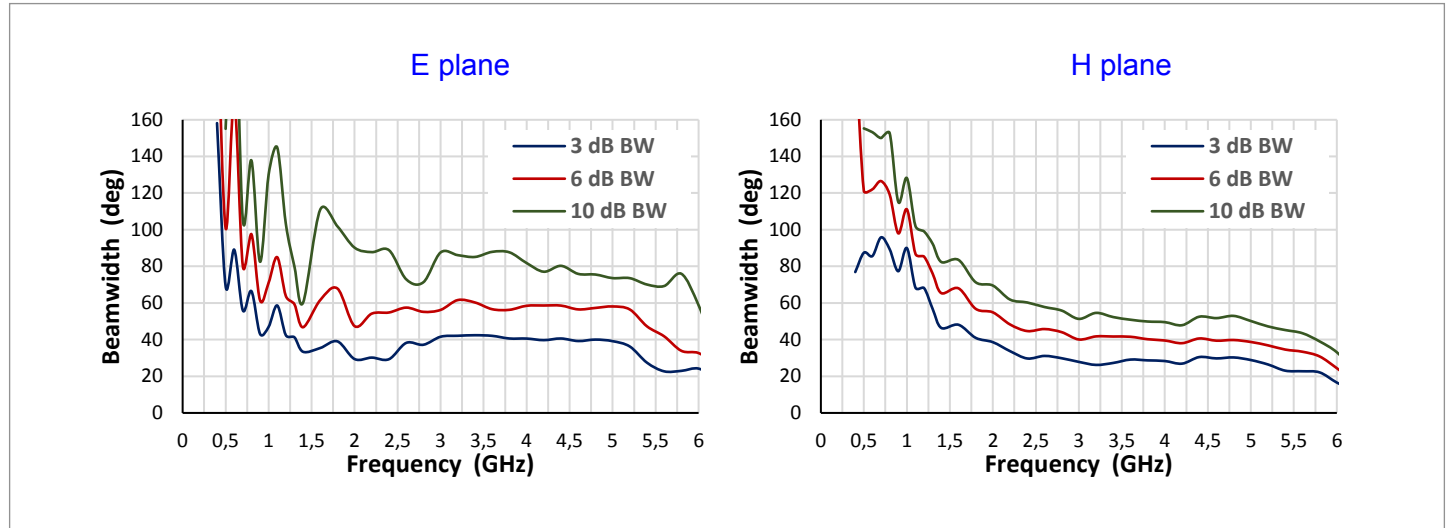
Quad Ridged Horn Antenna Model QRH400

Port B – Radiation Patterns



Quad Ridged Horn Antenna Model QRH400

Beamwidth – Port A



Beamwidth – Port B

