

# Quad Ridged Horn Antenna Model QRH50E

## Electrical Specifications

|                    |                    |
|--------------------|--------------------|
| Frequency Range    | 5 GHz – 50 GHz     |
| VSWR (max.)        | < 2.5              |
| Impedance          | 50 $\Omega$        |
| Connector          | 2 x 2.40 mm female |
| Power (CW / Pulse) | 5 W / 10 W         |

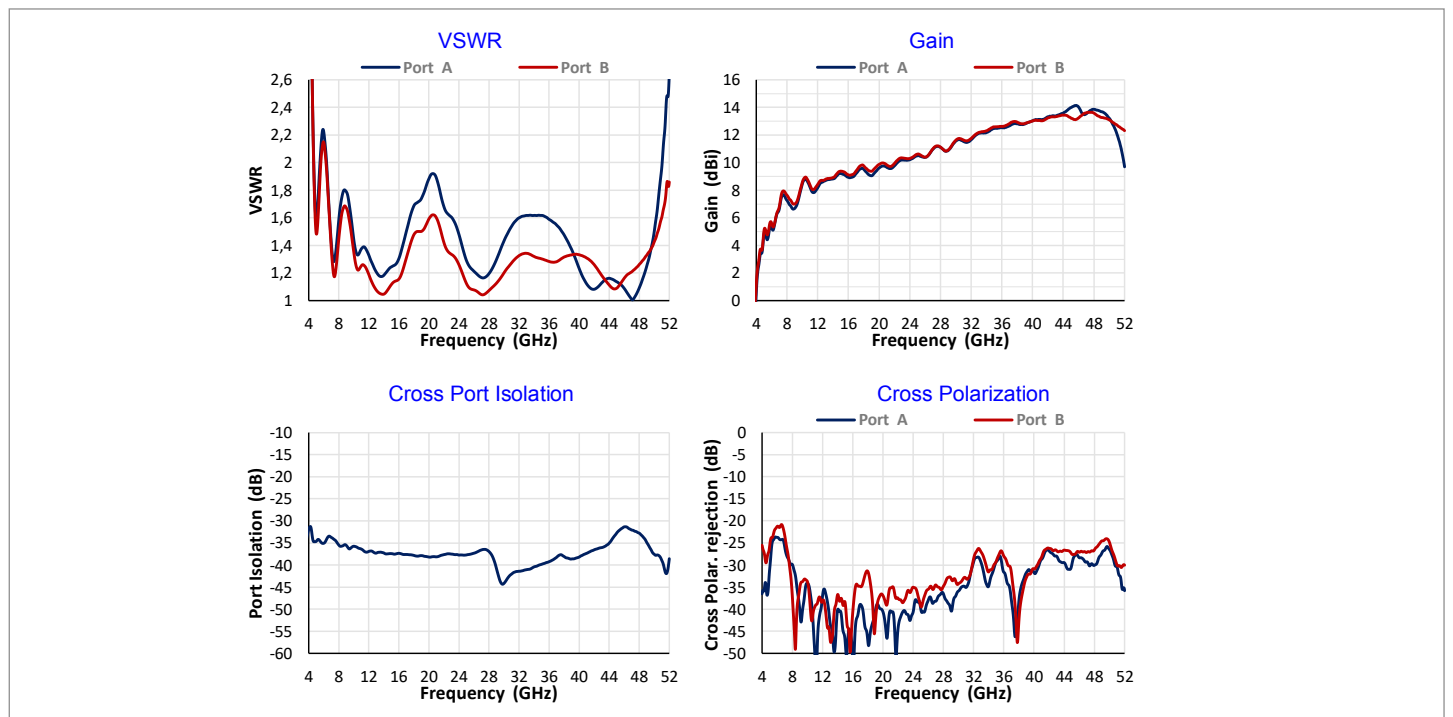
## Physical Specifications

|        |                 |
|--------|-----------------|
| Width  | 45 mm (1,77 in) |
| Depth  | 45 mm (1,77 in) |
| Height | 85 mm (3,35 in) |
| Weight | 78 g (0,172 lb) |

\* Linear or circular polarization (with hybrid)

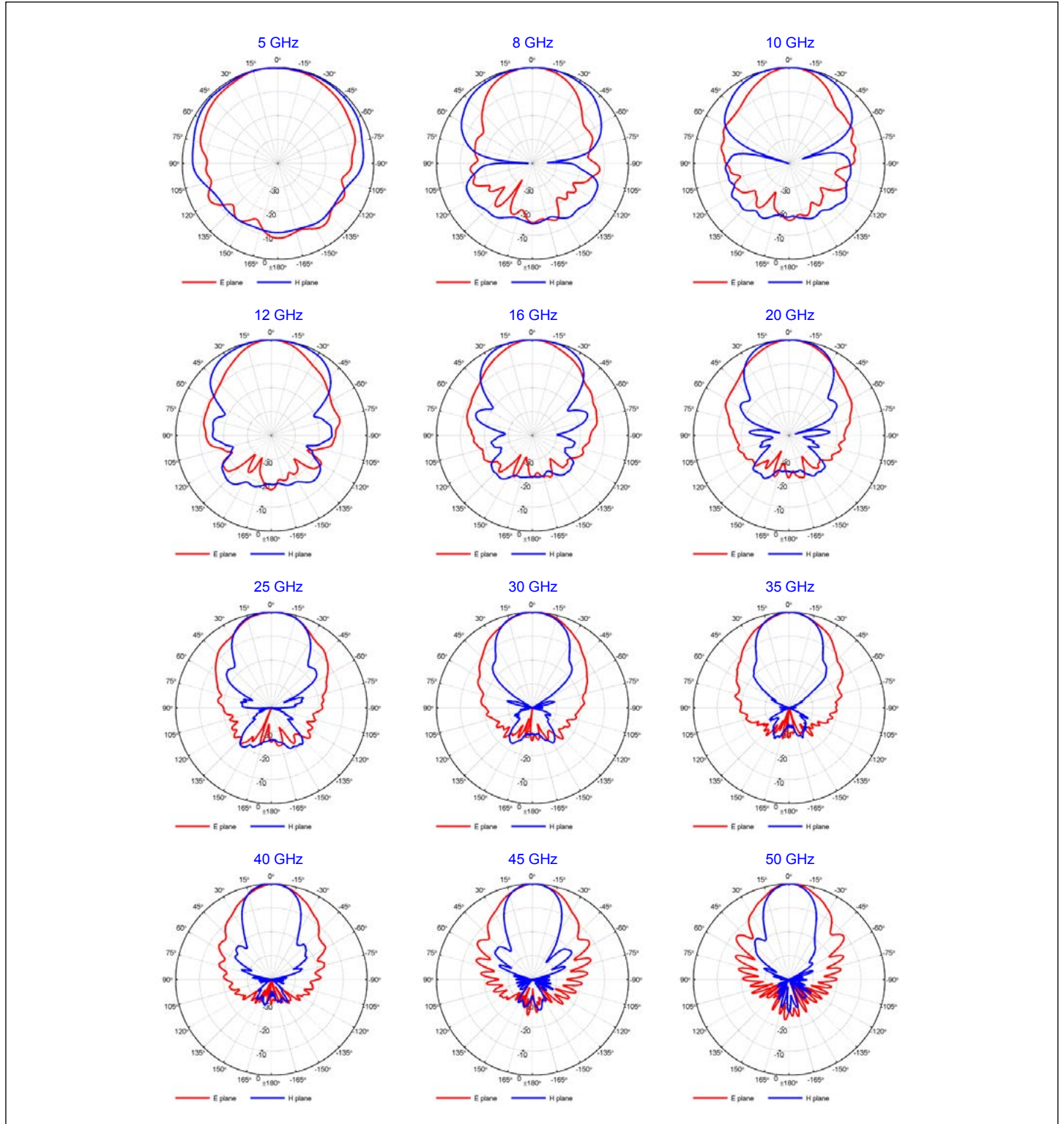


## Typical Parameters



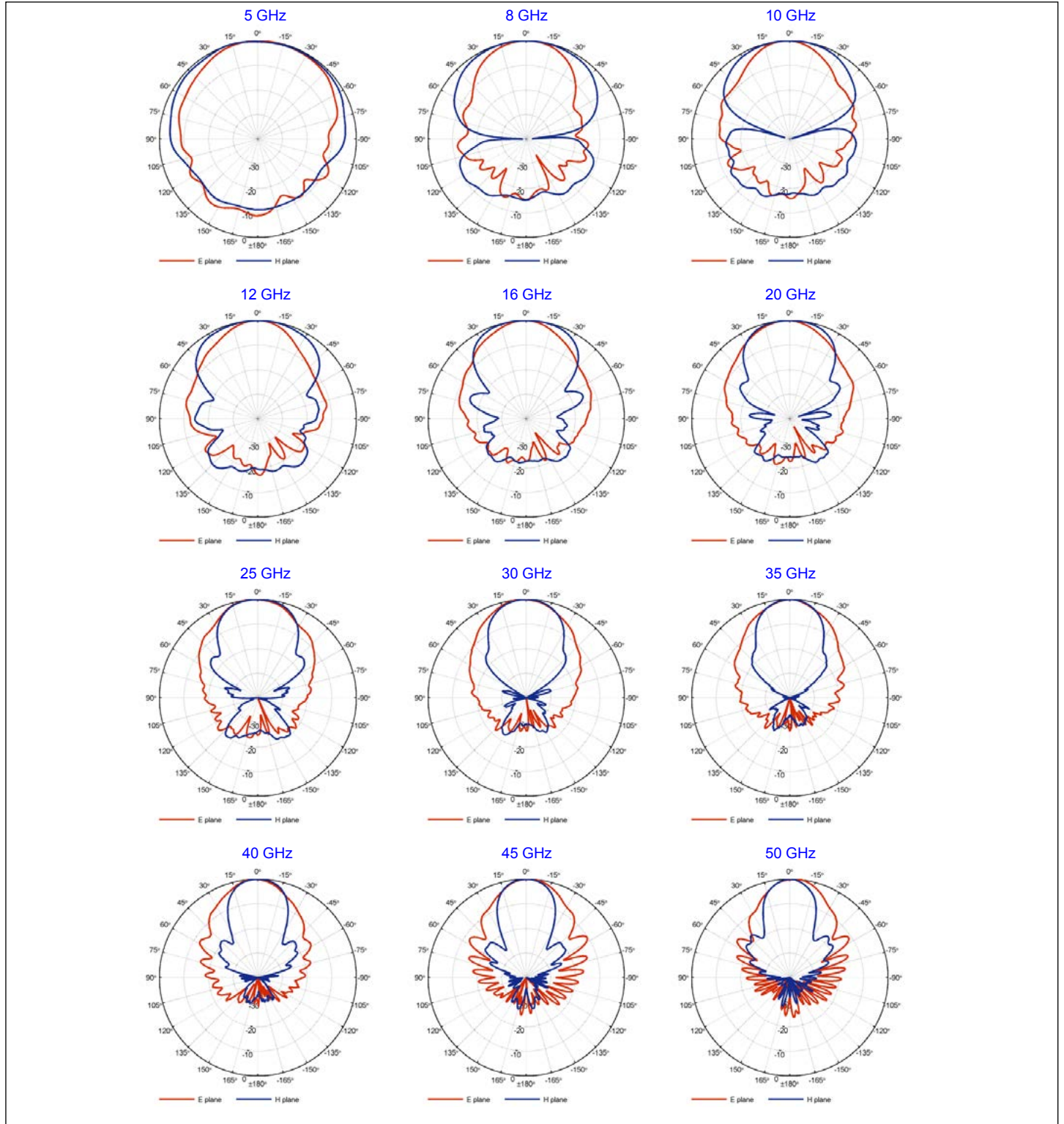
# Quad Ridged Horn Antenna Model QRH50E

## Port A – Radiation Patterns



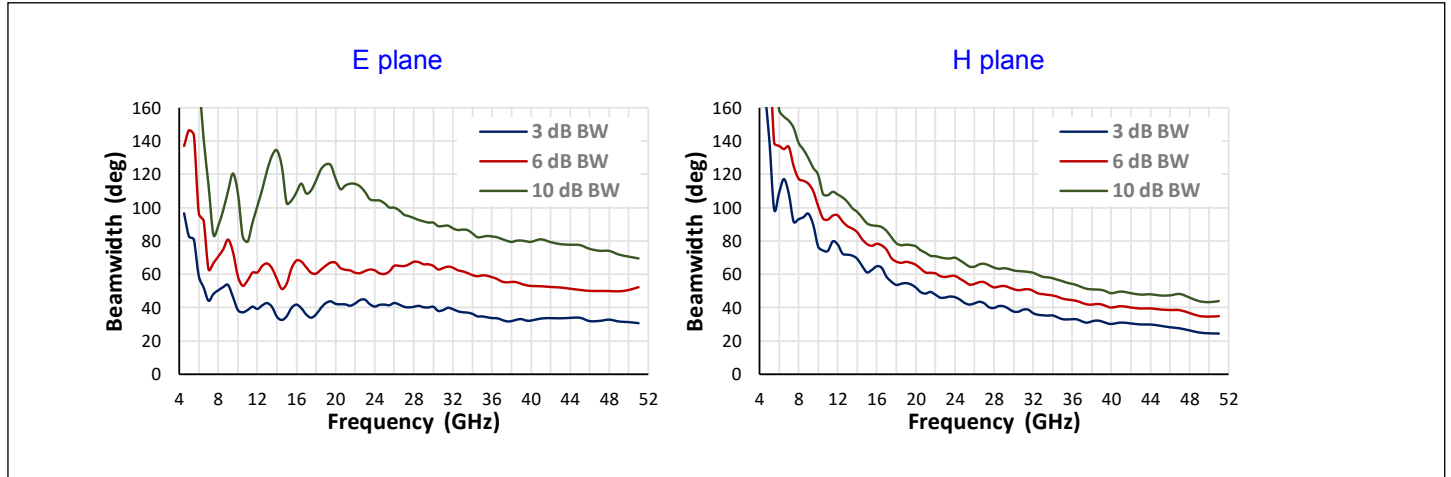
# Quad Ridged Horn Antenna Model QRH50E

## Port B – Radiation Patterns



# Quad Ridged Horn Antenna Model QRH50E

## Beamwidth – Port A



## Beamwidth – Port A

