

# Quad Ridged Horn Antenna Model QRH67E

## Electrical Specifications

Frequency Range	6 GHz – 67 GHz
VSWR (max.)	< 2,4
Impedance	50 $\Omega$
Connector	2 x 1,85 mm female
Power (CW / Pulse)	5 W / 10 W

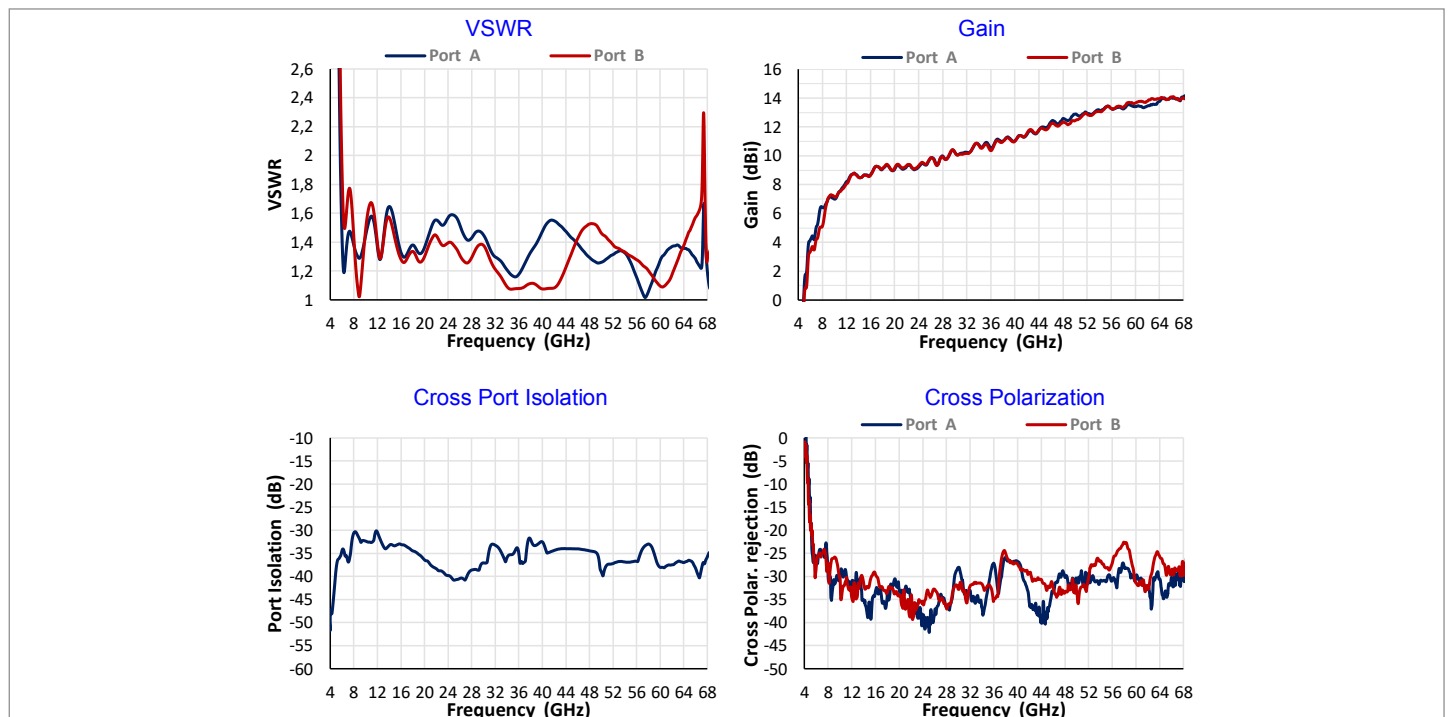
## Physical Specifications

Width	35,1 mm (1.382 in)
Depth	35,1 mm (1.382 in)
Height	77,5 mm (3.051 in)
Weight	70 g (0,154 lb)

\* Linear or circular polarization (with hybrid)

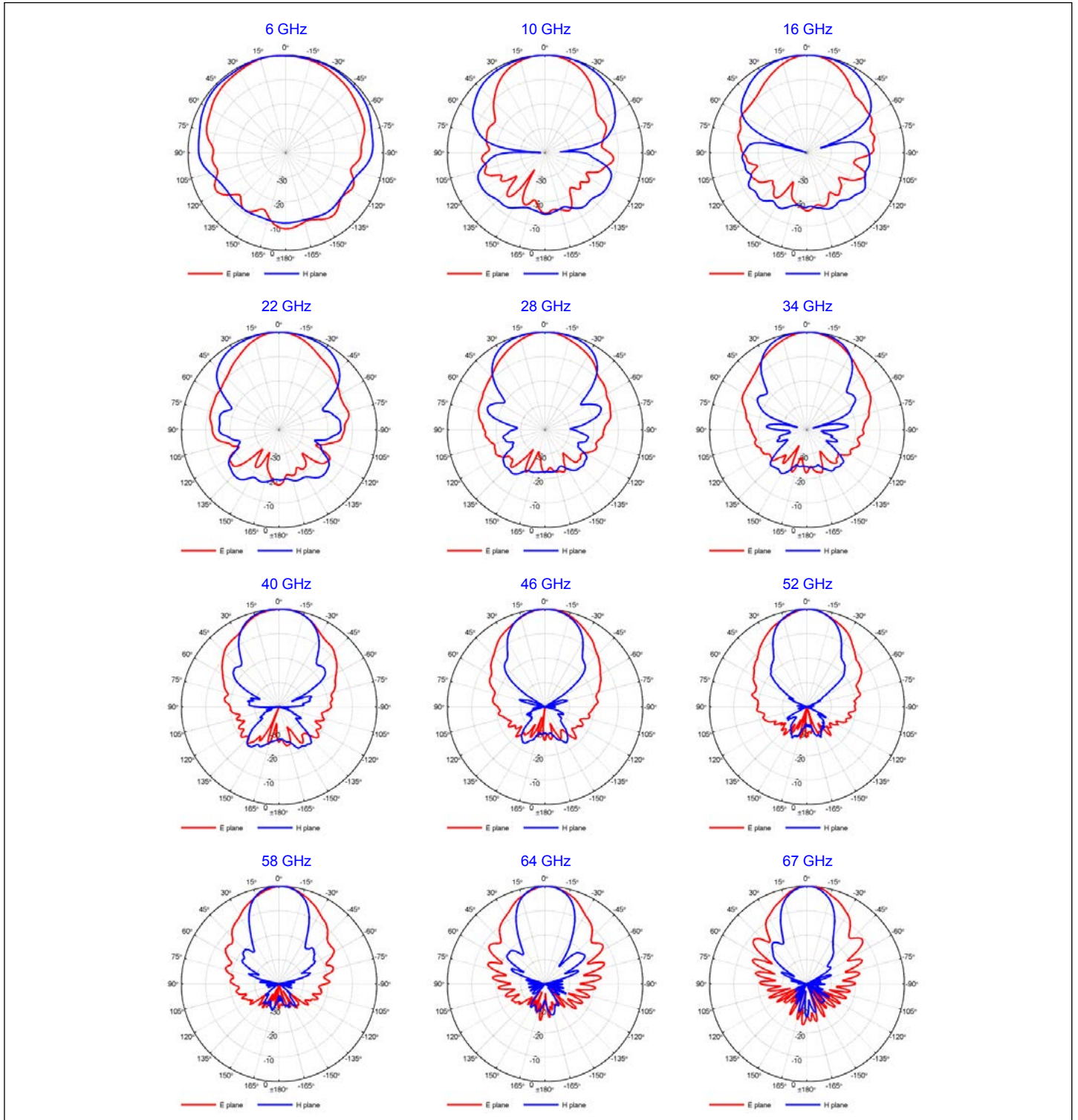


## Typical Parameters



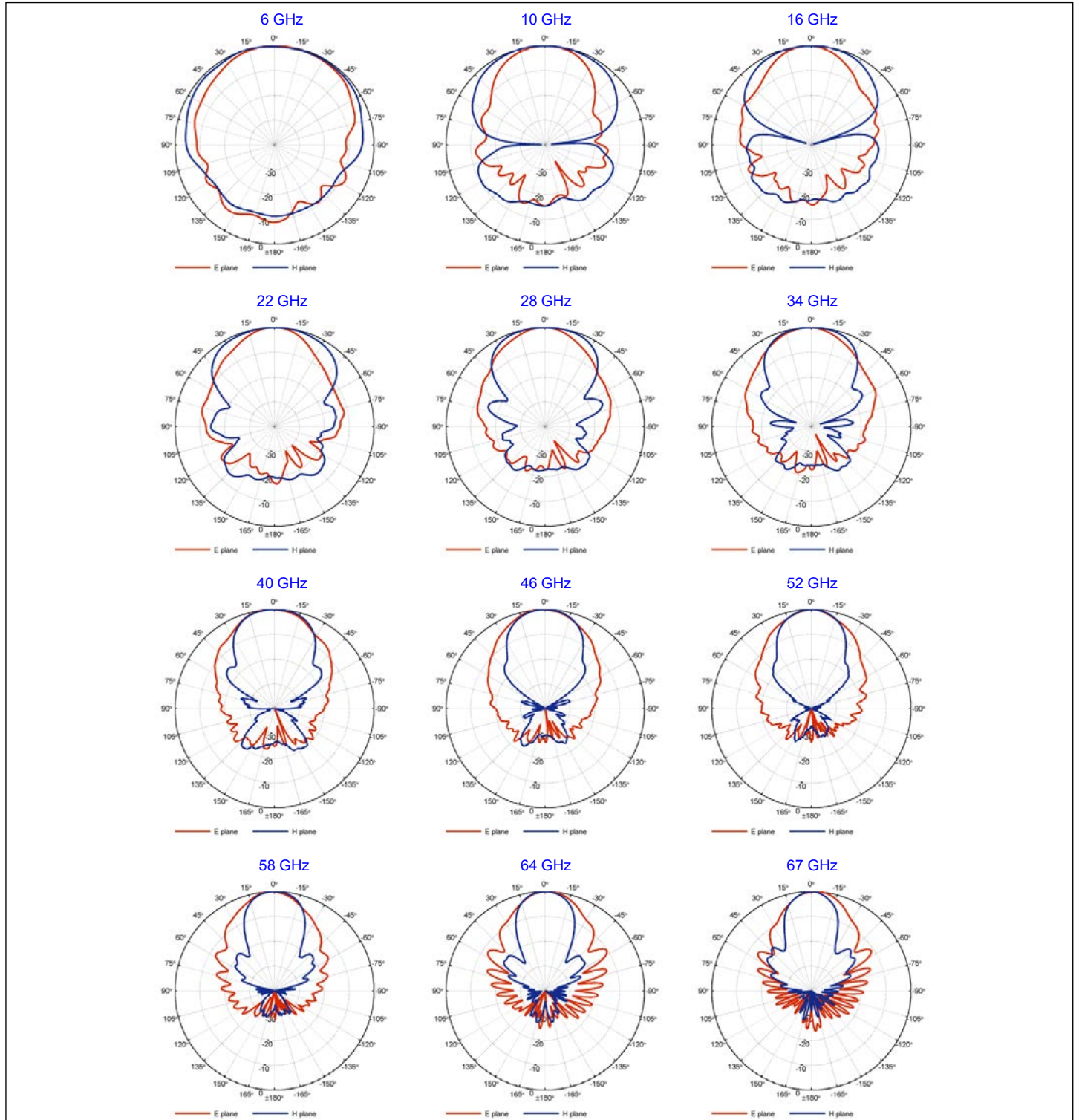
# Quad Ridged Horn Antenna Model QRH67E

## Port A – Radiation Patterns



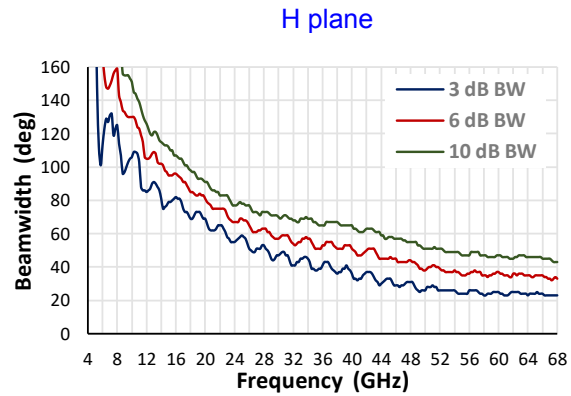
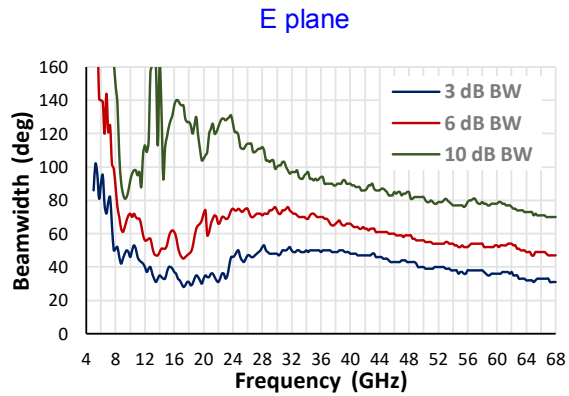
# Quad Ridged Horn Antenna Model QRH67E

## Port B – Radiation Patterns



# Quad Ridged Horn Antenna Model QRH67E

## Beamwidth – Port A



## Beamwidth – Port B

